

## Contact Information

Scott County and its partners are committed to working with interested individuals throughout this project. If you would like to provide input but cannot attend the Open House, or if you have questions about this project, you are encouraged to contact:

Curt Kobilarcsik  
Assistant County Engineer  
(952) 496-8345  
[ckobilarcsik@co.scott.mn.us](mailto:ckobilarcsik@co.scott.mn.us)

Scott County Highway Department  
600 Country Trail East  
Jordan, MN 55352  
(952) 496-8346

## Information on the Web

Information regarding this project will be available at:  
<https://www.scottcountymn.gov/508/Future-Projects-Studies>

Information on all county highway projects can be found at the Scott County website at [www.scottcountymn.gov](http://www.scottcountymn.gov). Go to **Roads & Transportation** and select **Current & Future Projects**.



Sign-up to receive project updates by E-Mail:  
[www.scottcountymn.gov/list.aspx](http://www.scottcountymn.gov/list.aspx)



Scott County Highway Department  
600 Country Trail East  
Jordan, MN 55352

Open House Invitation  
County Highway 42  
Improvement Project

## County Highway 42 Improvement Project

December, 2017

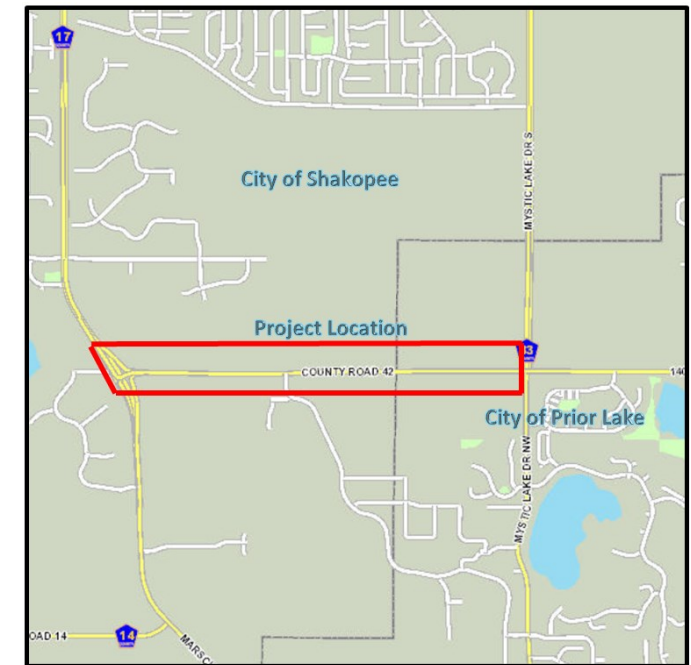


### OPEN HOUSE INVITATION

Thursday January 11, 2018

5:00—7:00 PM

Cross Of Peace Lutheran Church  
1506 Wood Duck Trail  
Shakopee, MN 55379



### What's Inside?

- Project Background/Purpose
- Open House Information
- Project Schedule

## Background/Information

Scott County in partnership with the City of Prior Lake, City of Shakopee, and SMSC are starting the concept development for improvements along County Highway (CH) 42 from CH 17 (Marschall Road) to CH 83 (Mystic Lake Drive).

County Highway 42 is a critical east-west corridor through this growing part of the Minneapolis-St. Paul metro area, providing an important link in the connection from Trunk Highway 169 all the way east to Hastings. Due to increasing traffic and projected future growth, the existing two-lane road is proposed to be reconstructed to a four-lane divided highway between CH 17 and CH 83. Tentatively, the County has programmed the reconstruction and improvements to occur in 2020.

## Project Purpose/Goals

County Highway 42 is an existing two lane rural roadway with gravel shoulders and limited turn lanes at intersections. The road corridor also does not have any bicycle or pedestrian accommodations. The purpose of the County Highway 42 Improvement project is to identify and develop improvements to the CH 42 corridor between CH 17 and CH 83 that address the current and future needs in the corridor. This project will build upon previous CH 42 studies.

Goals of the project include providing the following:

- An inclusive public participation process
- Safety and mobility serving the area for the long-term
- Establish continuity of corridor design in this region
- Support multimodal transportation needs

## Open House #1: Project Kick-Off

At the open house, you will have the opportunity to:

1. Review the project process and schedule;
2. Identify existing concerns and issues at the intersections and along the corridor; and
3. Assist in developing potential solutions to existing and future problems in the project area.

This is an informal open house meeting. No presentation will be given. Your input will ensure the project team develops a comprehensive understanding of the issues along the corridor from those who use the roadway every day. County staff, and City staff will be available to discuss issues and listen to your concerns. Maps and more information will be available for review.

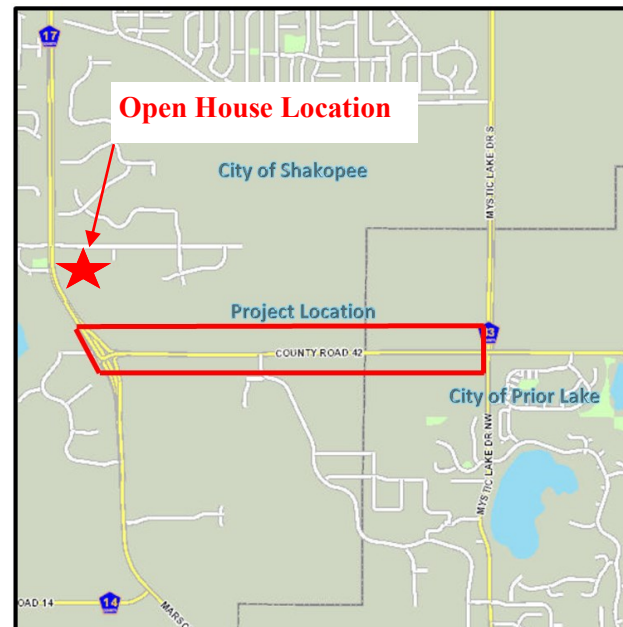
### County Highway 42 Improvement Project

#### Open House

Thursday January 11, 2018

5:00—7:00 PM

Cross Of Peace Lutheran Church



## Project Schedule

The proposed schedule for the design and construction of the project includes:

Preliminary Design	January - April 2018 ♦ Open House January 2018
Final Design	May - December 2018
Right-of-Way/ Easement Acquisition	2019
Construction	Spring 2020

Input collected during the open house will be used to complete the preliminary design layout. Final design will commence upon completion of preliminary design to determine right-of-way needs, construction limits, and prepare construction plans.