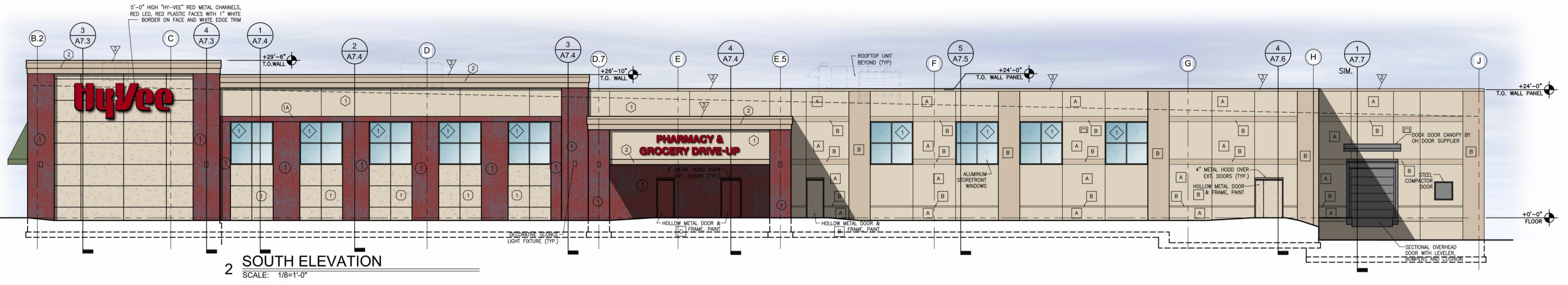


MASONRY UNITS:		PAINT COLORS ON PRECAST CONCRETE & CONCRETE:		METAL FLASHINGS:	
1	BRICK BY KANSAS BRICK & TILE. COLOR: #530 FLASH FACSET. SIZE: UTILITY. BOND: 1/3 RUNNING. MORTAR: SOLOMON GRIND 10H.	A	S.W. 7526 "MAISON BLANCHE" - MATCH EFS COLOR #1	▽	PREFINISHED METAL WALL CAP. COLOR TO MATCH EFS COLOR #1 LIGHT - FIRESTONE UNA-CLAD "ALMOND SR".
1A	BRICK BY KANSAS BRICK & TILE. COLOR: #530 FLASH FACSET. SIZE: UTILITY. BOND: SOLDIER. MORTAR: SOLOMON GRIND 10H.	B	S.W. 7527 "NAUTUCKET DUNE" - MATCH EFS COLOR #2	▽	PREFINISHED METAL WALL CAP. COLOR TO MATCH EFS COLOR #2 DARK - FIRESTONE UNA-CLAD "SIERRA TAN SR".
PRECAST CONCRETE:		C	SW 7593 "RUSTIC RED" - MATCH FACE BRICK COLOR	▽	STANDING SEAM METAL ROOF: FIRESTONE UNA-CLAD UC-14, 24 ga. COLOR: FIRESTONE UNA-CLAD "SHERWOOD GREEN SR". PROVIDE CONTINUOUS RAIL S-5 SNOW GUARDS AT ALL LOCATIONS.
E.I.F.S. COLORS:		GLASS & GLAZING		EXTERIOR METAL ASSEMBLIES:	
1	COLOR #1 LIGHT COLOR: SENERGY = T-01-0806-421-1. PAREX USA = 55169.	1	VISION GLASS: 1" CLEAR ANNEALED INSULATION GLASS, LOW-E #2 SURFACE.	1	HANDRAIL: PIPE RAILING, PAINTED-TO BE AT +36" ABOVE NOSE OF TREADS OR SURFACE OF RAMP, WITH A GRIPPING SURFACE 1-1/2" DIA. AND SPACED 1-1/2" FROM WALL. THEY ARE TO PROJECT 1/2" BEYOND THE TOP RISER AT +36" ABOVE SURFACE, AND PROJECT THE WIDTH OF ONE TREAD +12" BEYOND THE BOTTOM RISER AT +36" ABOVE SURFACE. THEY MUST RETURN TO THE WALL, OR BE PROTECTED WITH A SAFETY END.
2	COLOR #2 DARK COLOR: SENERGY = T-01-0709-421-2. PAREX USA = 55170.	1A	VISION GLASS: 1" CLEAR TEMPERED INSULATION GLASS, LOW-E #2 SURFACE.	2	GUARDRAIL: 1-1/2" O.D. PIPE RAILING, PAINTED WITH TOP AT +42" ABOVE TOP OF LANDING. PROVIDE INTERMEDIATE RAILS OR ORNAMENTAL PATTERN SUCH THAT A 4" DIAMETER SPHERE CANNOT PASS THROUGH.
E.I.F.S. EXPANSION JOINTS: SAME LOCATION @ MASONRY JOINT or AS NOTED ON DRAWINGS		2	SPANDREL GLASS: 1" ANNEALED INSULATION GLASS, SPANDREL PAINT #4 SURFACE LT. GRAY - VERIFY COLOR W/ ARCHITECT.	3	GUARDRAIL WITH HANDRAIL: A COMBINATION OF THE ABOVE TWO THAT MUST BE PROVIDED ON THE OPEN SIDES OF ALL EXTERIOR STAIRS & RAMPS. SEE GUARDRAIL/HANDRAIL DETAIL.
		2A	SPANDREL GLASS: 1" TEMPERED INSULATION GLASS, SPANDREL PAINT #4 SURFACE.		
		3	VISION GLASS: 5/8" CLEAR TEMPERED INSULATION GLASS, LOW-E #2 SURFACE, FROSTED FILM ON #4 SURFACE.		
		EXTERIOR METAL ASSEMBLIES:			
		PAINT ALL EXTERIOR HOLLOW METAL DOORS AND FRAMES TO MATCH ADJACENT WALL COLOR.			
		EXTERIOR HM DOORS LOCATED IN BRICK COLOR '1' TO BE PAINTED SHERWIN-WILLIAMS 'SW 7593 RUSTIC RED'.			
		PAINT ALL EXTERIOR PIPE BOLLARDS TO MATCH MAIN BRICK COLOR.			



REVISION

DATE

BY

SHAKOPEE FOOD STORE

HY-VEE, INC.
5820 WESTOWN PARKWAY
WEST DES MOINES, IOWA 50266
TELEPHONE: (515) 287-2800
FAX: (515) 287-2935

EMPLOYEE OWNED

HyVee®

LOCATION:

NORTH

EXTERIOR ELEVATIONS

DATE: June 2, 2016

SCALE: 1/8" = 1'-0"

JOB NUMBER:

SHEET: A6.0