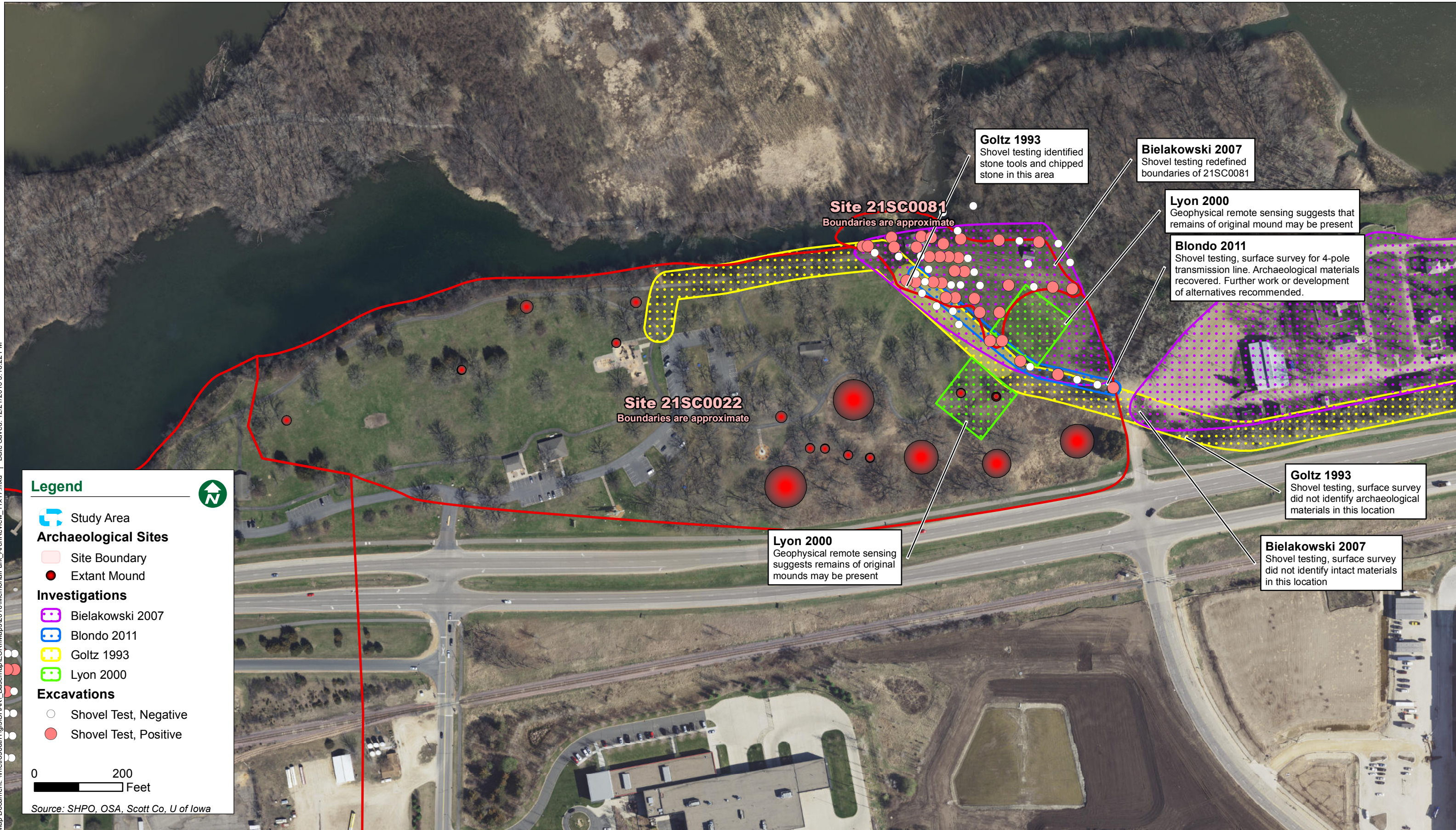




Map Document: \\metro\south1\gis\SHAK\Basemap\ESR\Maps\2016\MemorialPark\_ArchReview\_11x17.mxd | Date Saved: 12/21/2016 3:18:22 PM



**Legend**

-  Study Area
- Archaeological Sites**
-  Site Boundary
-  Extant Mound
- Investigations**
-  Bielakowski 2007
-  Blondo 2011
-  Goltz 1993
-  Lyon 2000
- Excavations**
-  Shovel Test, Negative
-  Shovel Test, Positive

0 200 Feet

Source: SHPO, OSA, Scott Co, U of Iowa

**Goltz 1993**  
Shovel testing identified stone tools and chipped stone in this area

**Bielakowski 2007**  
Shovel testing redefined boundaries of 21SC0081

**Lyon 2000**  
Geophysical remote sensing suggests that remains of original mound may be present

**Blondo 2011**  
Shovel testing, surface survey for 4-pole transmission line. Archaeological materials recovered. Further work or development of alternatives recommended.

**Site 21SC0081**  
Boundaries are approximate

**Site 21SC0022**  
Boundaries are approximate

**Lyon 2000**  
Geophysical remote sensing suggests remains of original mounds may be present

**Goltz 1993**  
Shovel testing, surface survey did not identify archaeological materials in this location

**Bielakowski 2007**  
Shovel testing, surface survey did not identify intact materials in this location