

# Canterbury Southwest PUD and Preliminary / Final Plat

Scheduled Review at Planning Commission on May 7, 2020



SHAKOPEE | MN

COMMUNITY PRIDE SINCE 1857

City of Shakopee | 485 Gorman St., Shakopee MN 55379 | 952-233-9300 | [www.ShakopeeMN.gov](http://www.ShakopeeMN.gov)

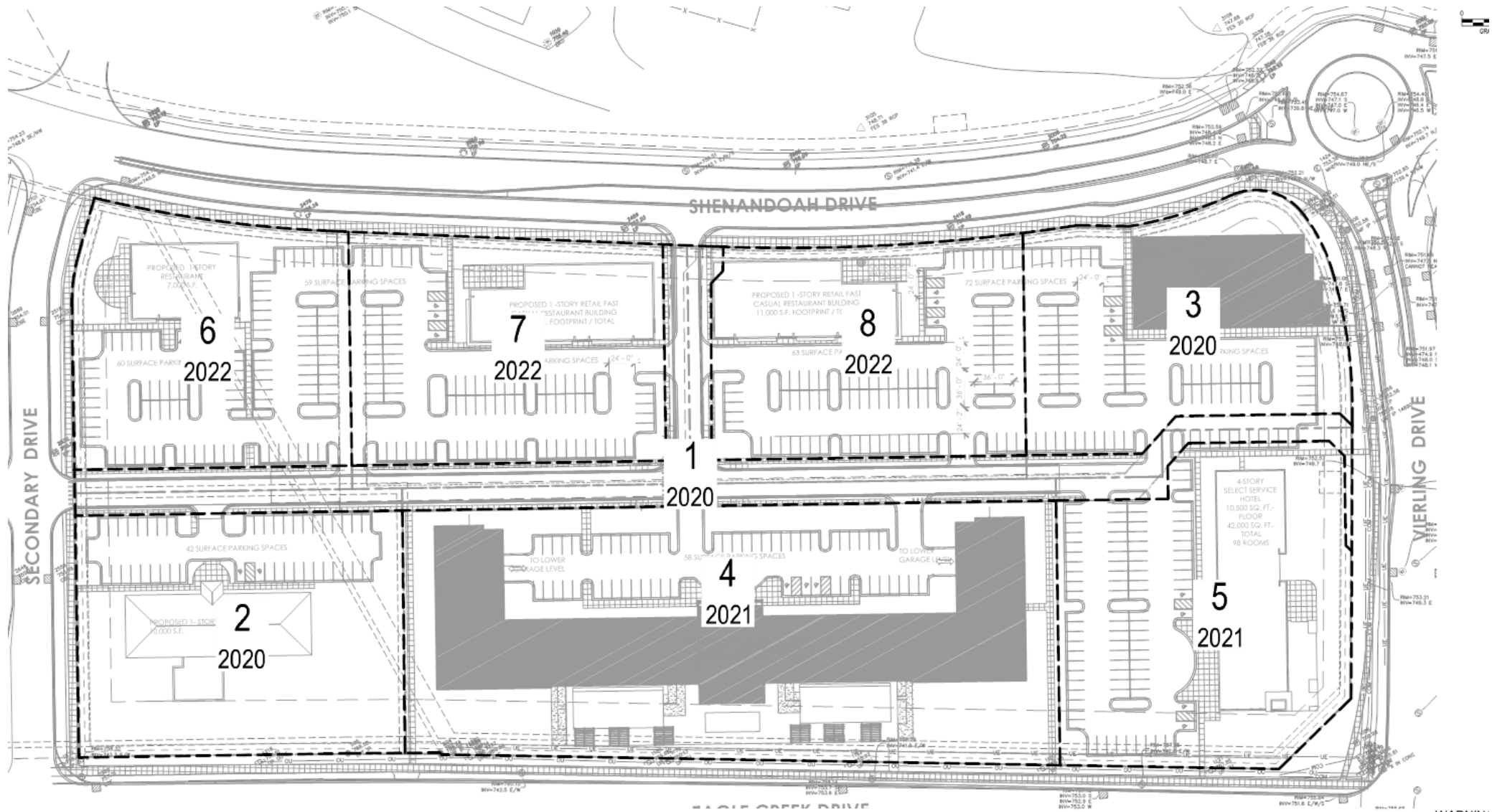
# Site Location



SHAKOPEE | MN  
COMMUNITY PRIDE SINCE 1857

City of Shakopee | 485 Gorman St., Shakopee MN 55379 | 952-233-9300 | www.ShakopeeMN.gov

# Site Plan

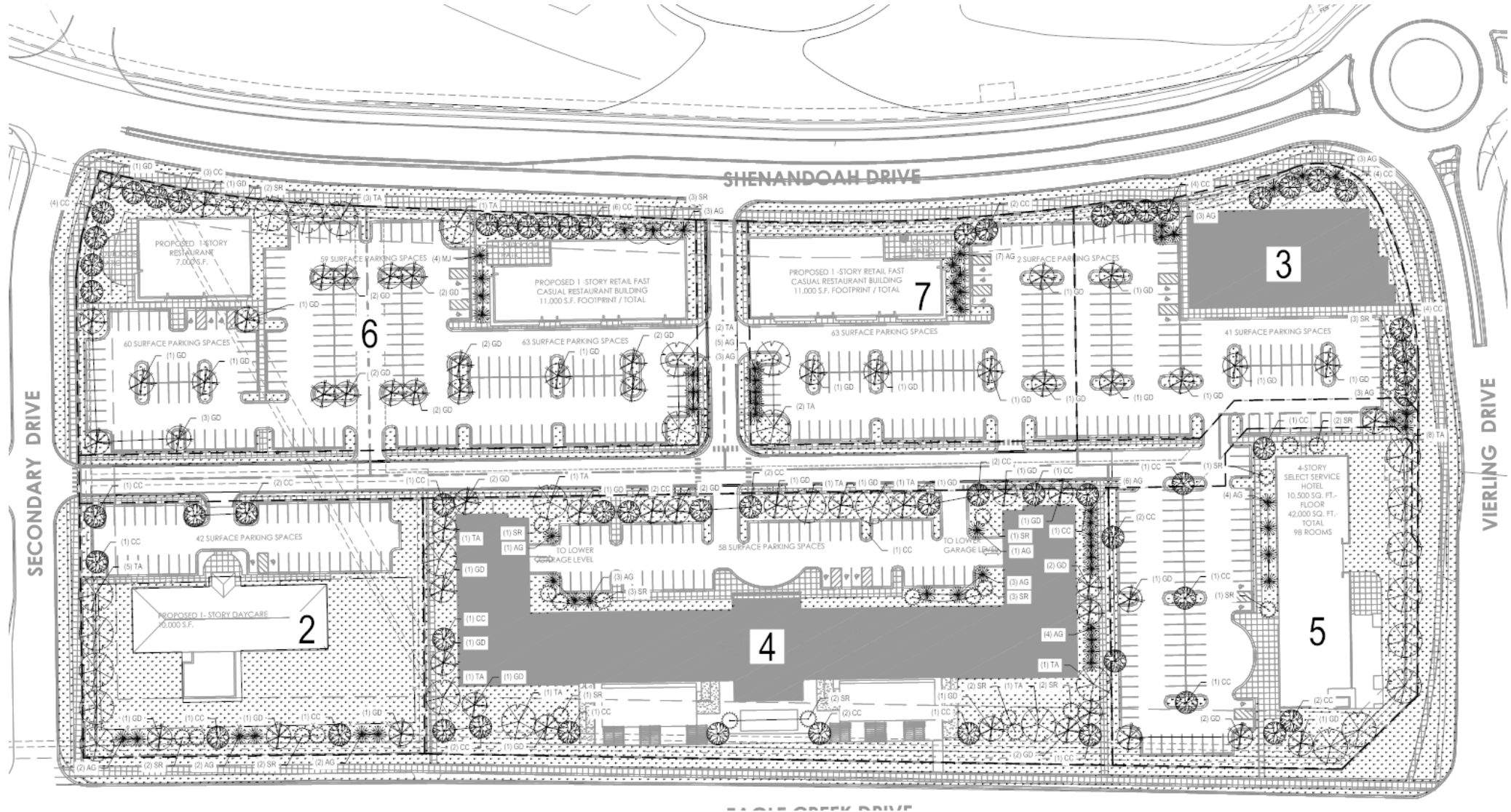


**SHAKOPEE** | MN

COMMUNITY PRIDE SINCE 1857

City of Shakopee | 485 Gorman St., Shakopee MN 55379 | 952-233-9300 | www.ShakopeeMN.gov

# Landscape Plan

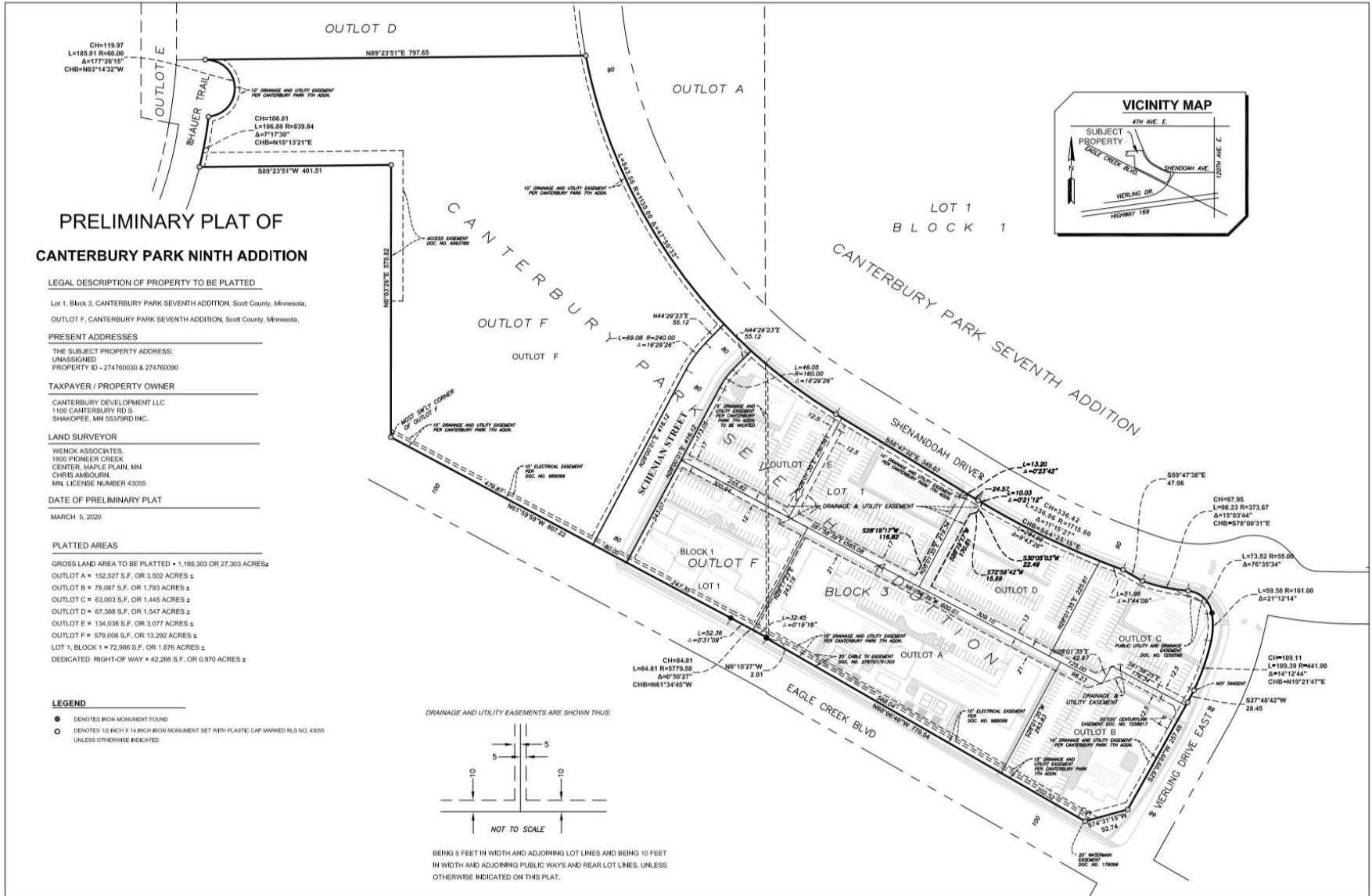


**SHAKOPEE** | MN

COMMUNITY PRIDE SINCE 1857

City of Shakopee | 485 Gorman St., Shakopee MN 55379 | 952-233-9300 | www.ShakopeeMN.gov

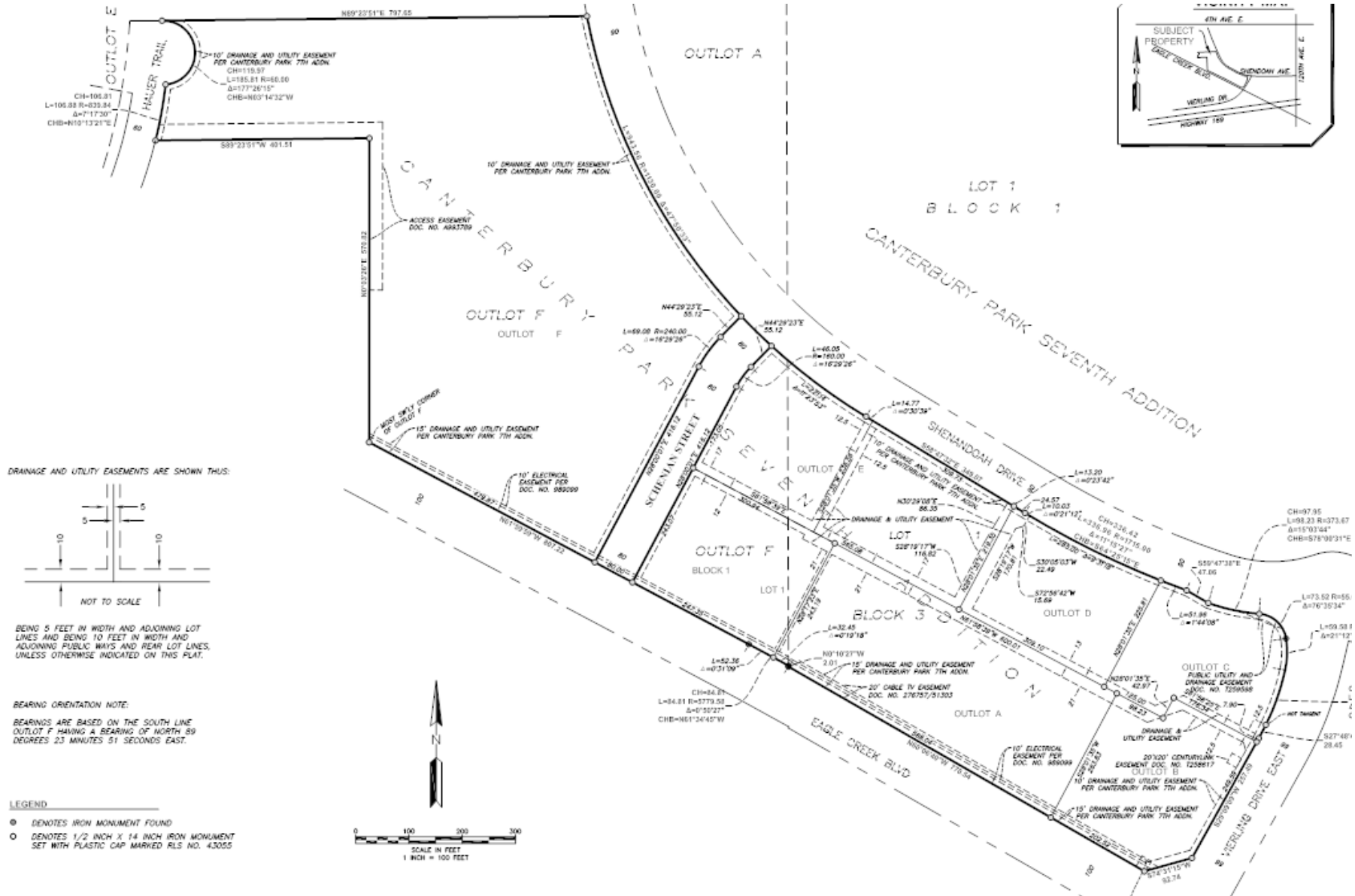
# Preliminary Plat



**SHAKOPEE | MN**  
 COMMUNITY PRIDE SINCE 1857

City of Shakopee | 485 Gorman St., Shakopee MN 55379 | 952-233-9300 | www.ShakopeeMN.gov

# Final Plat



**SHAKOPEE** | MN

COMMUNITY PRIDE SINCE 1857  
City of Shakopee | 485 Gorman St., Shakopee MN 55379 | 952-233-9300 | www.ShakopeeMN.gov