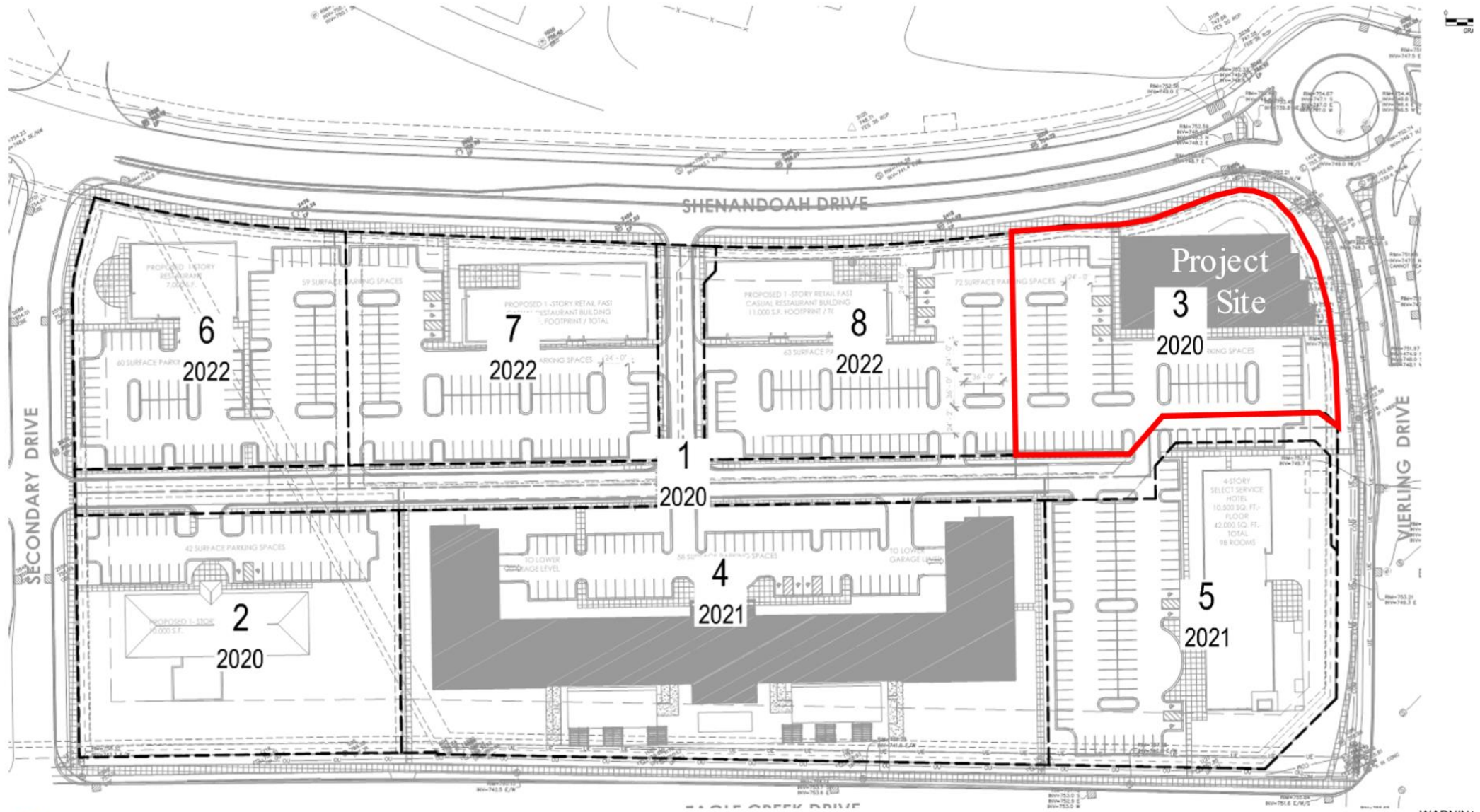


Canterbury Southwest
PUD Amendment
for
Greystone Construction Corporate
Office

Scheduled Review at Planning Commission on May 7, 2020

Site Plan



SHAKOPEE | MN

COMMUNITY PRIDE SINCE 1857
City of Shakopee | 485 Gorman St., Shakopee MN 55379 | 952-233-9300 | www.ShakopeeMN.gov

GREYSTONE CORPORATE OFFICE





North Perspective

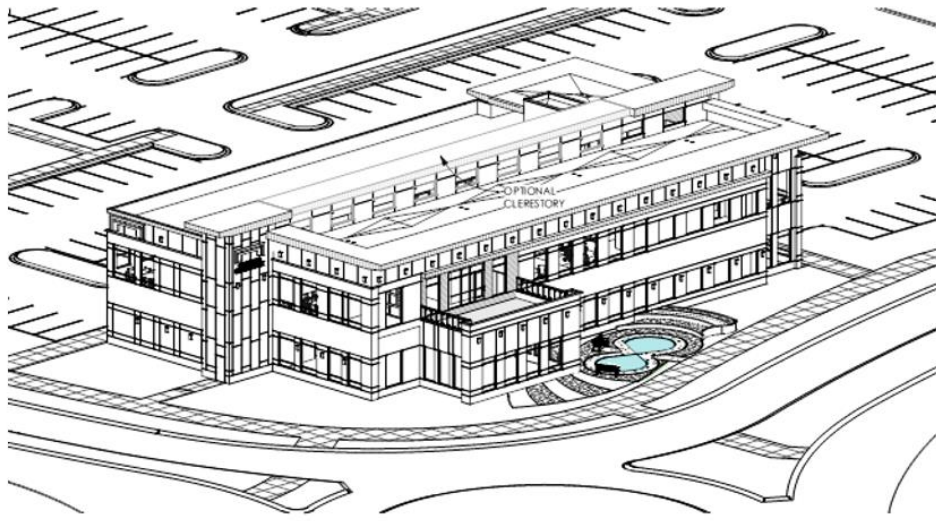


South Perspective

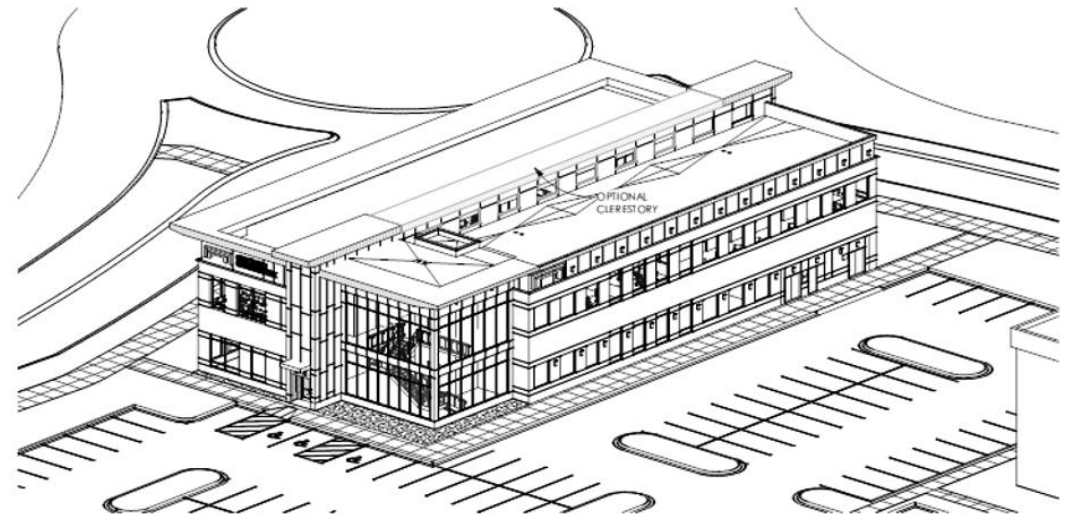


SHAKOPEE | MN
COMMUNITY PRIDE SINCE 1857

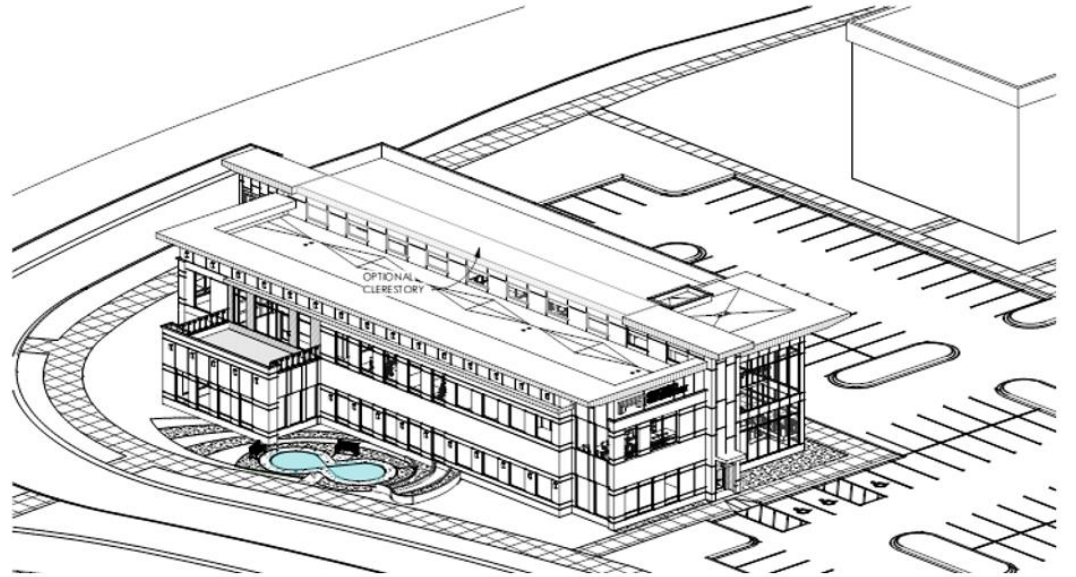
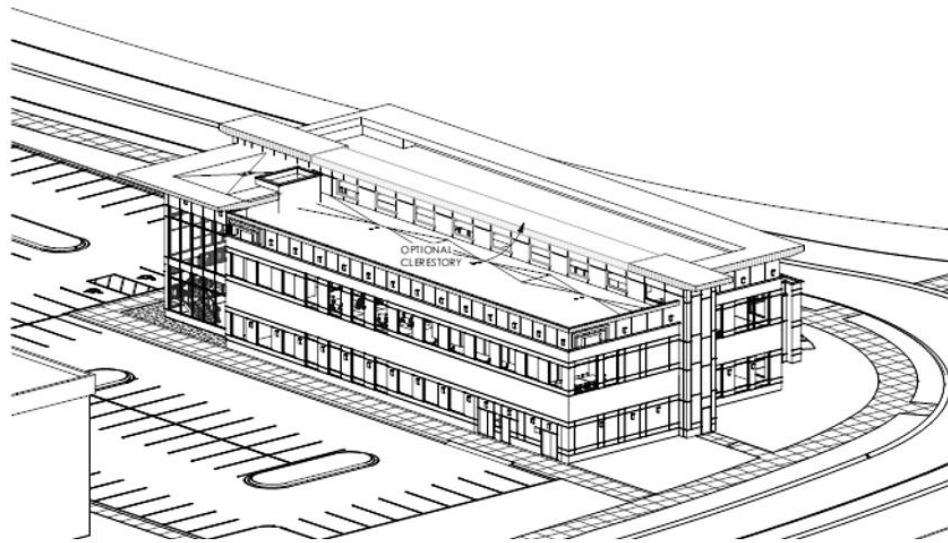
City of Shakopee | 485 Gorman St., Shakopee MN 55379 | 952-233-9300 | www.shakopeeMN.gov



1 NORTHEAST AXON
SCALE



2 SOUTHWEST AXON
SCALE



SHAKOPEE | MN

COMMUNITY PRIDE SINCE 1857

City of Shakopee | 485 Gorman St., Shakopee MN 55379 | 952-233-9300 | www.ShakopeeMN.gov