

# Suite Living Senior Care of Shakopee PUD Amendment

Planning Commission  
September 3, 2020



SHAKOPEE | MN

COMMUNITY PRIDE SINCE 1857

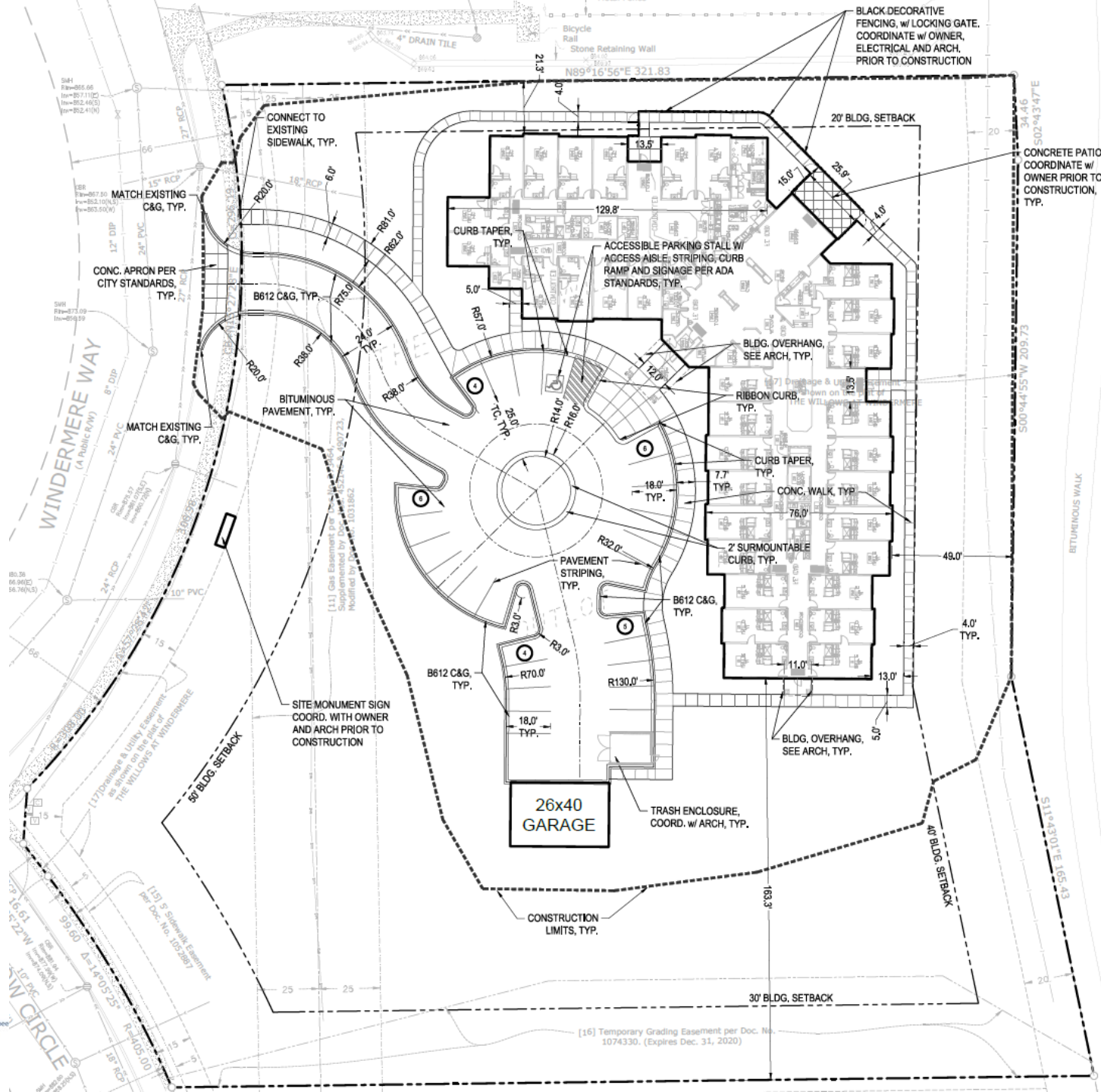
City of Shakopee | 485 Gorman St., Shakopee MN 55379 | 952-233-9300 | www.ShakopeeMN.gov

# Site Aerial



**SHAKOPEE** | MN  
COMMUNITY PRIDE SINCE 1857  
City of Shakopee | 485 Gorman St., Shakopee MN 55379 | 952-233-9300 | www.ShakopeeMN.gov

# Site Plan



**SHAKOPEE** | MN

COMMUNITY PRIDE SINCE 1857  
 City of Shakopee | 485 Gorman St., Shakopee MN 55379 | 952-233-9300 | www.Shakopee.com

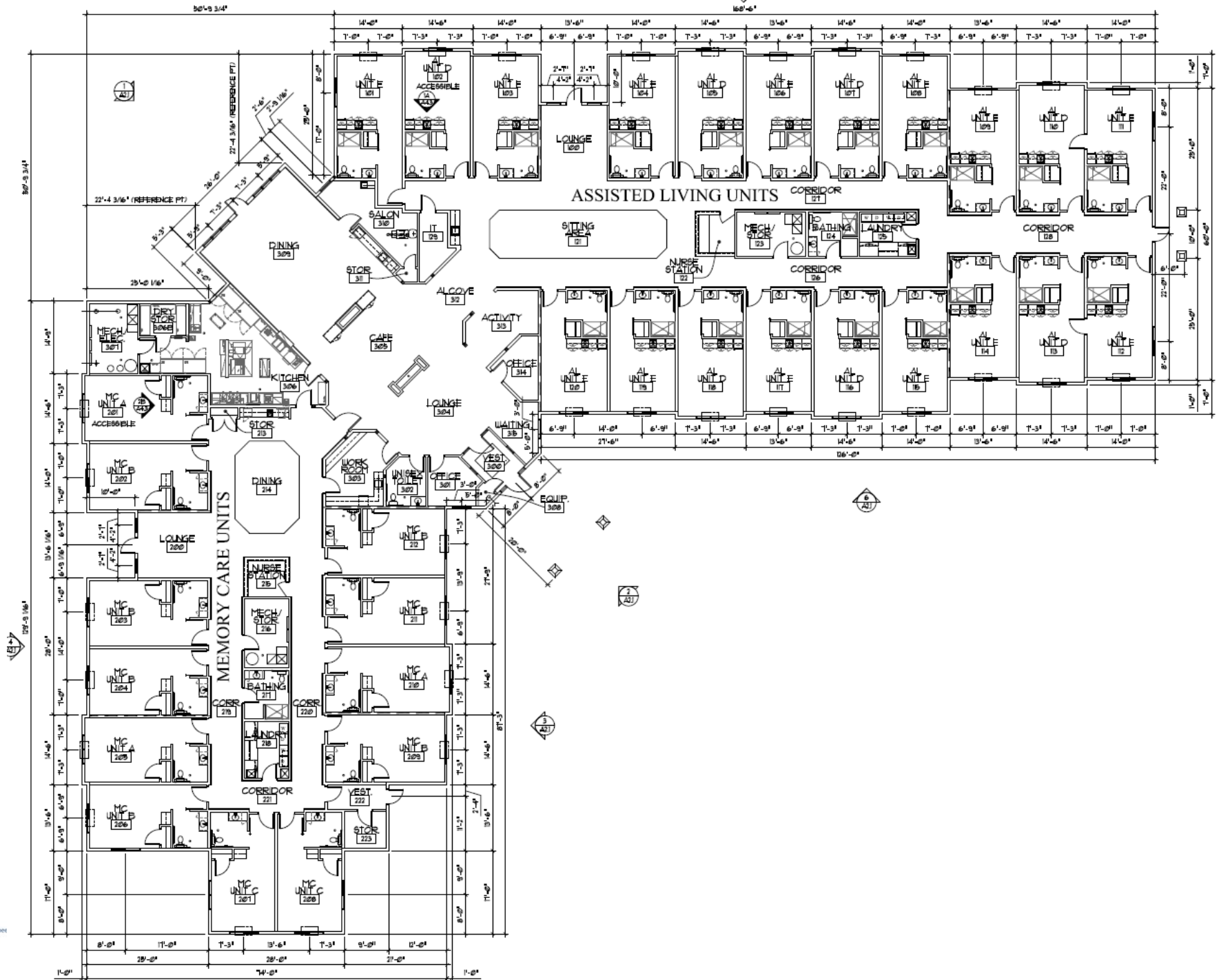


# Landscape Plan



**SHAKOPEE | MN**  
COMMUNITY PRIDE SINCE 1857  
City of Shakopee | 485 Gorman St., Shakopee MN 55379 | 952-233-9300 | www.ShakopeeMN.gov

# Floor Plan





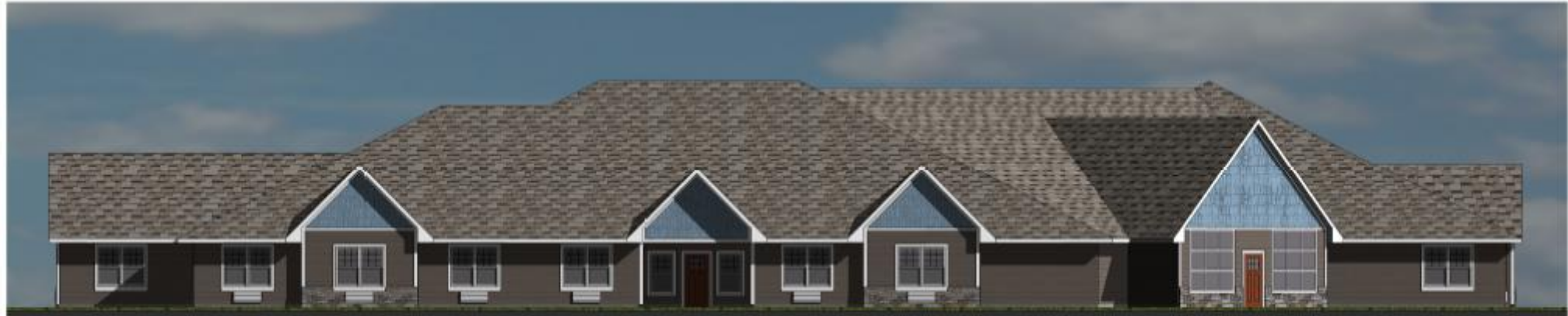
# Elevations



1 PROPOSED FRONT ELEVATION



3 PROPOSED SIDE ELEVATION (ASSISTED LIVING)



5 PROPOSED EAST ELEVATION

## Project Narrative:

Hampton Senior Care of Shakopee is proposing a PUD Amendment to allow a senior care facility that will feature 20 assisted living units and 12 memory care units on property located just south of New Horizon Academy and north of the Willows of Windermere apartment complex. Amenities will include a congregate dining room, sun room, activity/craft area and a secure outdoor porch area.

The building will be constructed of LP horizontal lap siding, LP Shake siding and cultured stone veneer, with 26 parking spaces for their 3-5 employees and family/friend visitors. The proposed landscape plan is consistent with City Code requirements.

The property has preliminary plat approval, and is requesting final plat approval. The final plat is generally consistent with the approved preliminary plat.