

**PRELIMINARY:
NOT FOR
CONSTRUCTION**

SUITE LIVING SHAKOPEE
WINDEREMERE WAY AND WILLOW CIRCLE, SHAKOPEE, MN 55379
SUITE LIVING/HAMPTON COMPANIES LLC
1824 BUERKLE RD, WHITE BEAR LAKE, MN 55110

I HEREBY CERTIFY THAT THIS PLAN, SPECIFICATION, OR REPORT WAS PREPARED BY ME OR UNDER MY DIRECT SUPERVISION AND THAT I AM A DULY LICENSED PROFESSIONAL ENGINEER UNDER THE LAWS OF THE STATE OF MINNESOTA.

Joseph M. Diederichs
Joseph M. Diederichs
DATE: 07/31/2020 LICENSE NO. 55988

ISSUE/SUBMITTAL SUMMARY
DATE DESCRIPTION
07/31/2020 CITY SUBMITTAL

DRAWN BY: BB, RL REVIEWED BY: JD
PROJECT NUMBER: 19453

REVISION SUMMARY
DATE DESCRIPTION

REVISION SUMMARY
DATE DESCRIPTION

REVISION SUMMARY
DATE DESCRIPTION

REVISION SUMMARY
DATE DESCRIPTION

REVISION SUMMARY
DATE DESCRIPTION

REVISION SUMMARY
DATE DESCRIPTION

REVISION SUMMARY
DATE DESCRIPTION

REVISION SUMMARY
DATE DESCRIPTION

SITE LAYOUT NOTES:

- CONTRACTOR SHALL VERIFY LOCATIONS AND LAYOUT OF ALL SITE ELEMENTS PRIOR TO BEGINNING CONSTRUCTION, INCLUDING BUT NOT LIMITED TO, LOCATIONS OF EXISTING AND PROPOSED PROPERTY LINES, EASEMENTS, SETBACKS, UTILITIES, BUILDINGS AND PAVEMENTS. CONTRACTOR IS RESPONSIBLE FOR FINAL LOCATIONS OF ALL ELEMENTS FOR THE SITE. ANY REVISIONS REQUIRED AFTER COMMENCEMENT OF CONSTRUCTION, DUE TO LOCAL ADJUSTMENTS SHALL BE CORRECTED AT NO ADDITIONAL COST TO OWNER. ADJUSTMENTS TO THE LAYOUT SHALL BE APPROVED BY THE ENGINEER/LANDSCAPE ARCHITECT PRIOR TO INSTALLATION OF MATERIALS. STAKE LAYOUT FOR APPROVAL.
- THE CONTRACTOR SHALL OBTAIN ALL NECESSARY PERMITS PRIOR TO CONSTRUCTION, INCLUDING A RIGHT-OF-WAY AND STREET OPENING PERMIT.
- THE CONTRACTOR SHALL VERIFY RECOMMENDATIONS NOTED IN THE GEO TECHNICAL REPORT PRIOR TO INSTALLATION OF SITE IMPROVEMENT MATERIALS.
- CONTRACTOR SHALL FIELD VERIFY COORDINATES AND LOCATION DIMENSIONS OF THE BUILDING AND STAKE FOR REVIEW AND APPROVAL BY THE OWNERS REPRESENTATIVE PRIOR TO INSTALLATION OF FOOTING MATERIALS.
- LOCATIONS OF STRUCTURES, ROADWAY PAVEMENTS, CURBS AND GUTTERS, BOLLARDS, AND WALKS ARE APPROXIMATE AND SHALL BE STAKED IN THE FIELD, PRIOR TO INSTALLATION, FOR REVIEW AND APPROVAL BY THE ENGINEER/LANDSCAPE ARCHITECT.
- CURB DIMENSIONS SHOWN ARE TO FACE OF CURB. BUILDING DIMENSIONS ARE TO FACE OF CONCRETE FOUNDATION. LOCATION OF BUILDING IS TO BUILDING FOUNDATION AND SHALL BE AS SHOWN ON THE DRAWINGS.
- THE CONTRACTOR SHALL SUBMIT SHOP DRAWINGS OR SAMPLES AS SPECIFIED FOR REVIEW AND APPROVAL BY THE ENGINEER/LANDSCAPE ARCHITECT PRIOR TO FABRICATION FOR ALL PREFABRICATED SITE IMPROVEMENT MATERIALS SUCH AS, BUT NOT LIMITED TO THE FOLLOWING, FURNISHINGS, PAVEMENTS, WALLS, RAILINGS, BENCHES, FLAGPOLES, LANDING PADS FOR CURB RAMPS, AND LIGHT AND POLES. THE OWNER RESERVES THE RIGHT TO REJECT INSTALLED MATERIALS NOT PREVIOUSLY APPROVED.
- PEDESTRIAN CURB RAMPS SHALL BE CONSTRUCTED WITH TRUNCATED DOME LANDING AREAS IN ACCORDANCE WITH A.D.A. REQUIREMENTS-SEE DETAIL.
- CROSSWALK STRIPING SHALL BE 24" WIDE WHITE PAINTED LINE, SPACED 48" ON CENTER PERPENDICULAR TO THE FLOW OF TRAFFIC. WIDTH OF CROSSWALK SHALL BE 5' WIDE. ALL OTHER PAVEMENT MARKINGS SHALL BE WHITE IN COLOR UNLESS OTHERWISE NOTED OR REQUIRED BY ADA OR LOCAL GOVERNING BODIES.
- SEE SITE PLAN FOR CURB AND GUTTER TYPE, TAPER BETWEEN CURB TYPES-SEE DETAIL.
- ALL CURB RADI ARE MINIMUM 3' UNLESS OTHERWISE NOTED.
- CONTRACTOR SHALL REFER TO FINAL PLAT FOR LOT BOUNDARIES, NUMBERS, AREAS AND DIMENSIONS PRIOR TO SITE IMPROVEMENTS.
- FIELD VERIFY ALL EXISTING SITE CONDITIONS, DIMENSIONS.
- PARKING IS TO BE SET PARALLEL OR PERPENDICULAR TO EXISTING BUILDING UNLESS NOTED OTHERWISE.
- ALL PARKING LOT PAINT STRIPING TO BE WHITE, 4" WIDE TYP.
- BITUMINOUS PAVING TO BE "LIGHT DUTY" UNLESS OTHERWISE NOTED. SEE DETAIL SHEETS FOR PAVEMENT SECTIONS.
- ALL TREES THAT ARE TO REMAIN ARE TO BE PROTECTED FROM DAMAGE WITH A CONSTRUCTION FENCE AT THE DRIP LINE. SEE LANDSCAPE DOCUMENTS.

SITE PLAN LEGEND:

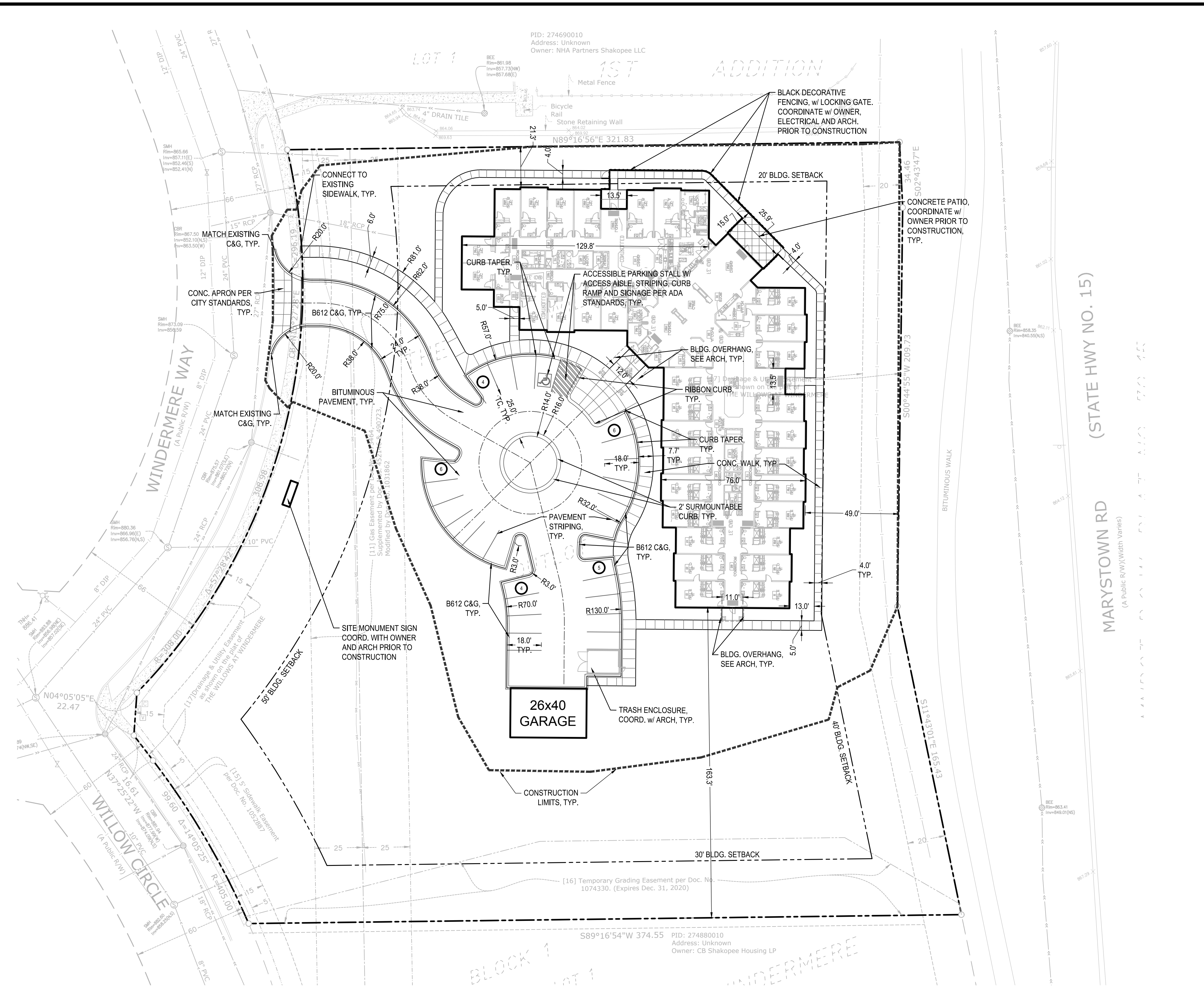
- SPECIALTY PAVEMENT - PROVIDE BID FOR THE FOLLOWING OPTIONS, INCLUDE VARIATIONS OF BASE MATERIAL AND OTHER NECESSARY COMPONENTS.
1. STAMPED & COLORED CONCRETE
2. CONCRETE PAVERS
MAKERS, COLORS, MODELS, & PATTERN TO BE INCLUDED IN SHOP DRAWING SUBMITTAL PRIOR TO CONSTRUCTION.
- PERVIOUS PAVEMENT - CONCRETE PAVER PERVIOUS SYSTEM. INCLUDE ALL BASE MATERIAL AND APPURTENANCES AS SPECIFIED PER MANUFACTURER SPECIFICATIONS & INSTRUCTIONS.
MAKE: BELGARD, OR EQUIVILANT
MODEL: AQUASTONE, OR EQUIVILANT
COLOR: T.B.D. - PROVIDE SAMPLES. SHOP DRAWINGS & PRODUCT DATA REQUIRED PRIOR TO CONSTRUCTION.
- LIGHT DUTY BITUMINOUS PAVEMENT. SEE GEOTECHNICAL REPORT FOR AGGREGATE BASE & WEAR COURSE DEPTH, SEE DETAIL.
- HEAVY DUTY BITUMINOUS PAVEMENT. SEE GEOTECHNICAL REPORT FOR AGGREGATE BASE & WEAR COURSE DEPTH, SEE DETAIL.
- CONCRETE PAVEMENT AS SPECIFIED (PAD OR WALK) SEE GEOTECHNICAL REPORT FOR AGGREGATE BASE & CONCRETE DEPTHS, SEE DETAIL.
- PROPERTY LINE
- CONSTRUCTION LIMITS
- CURB AND GUTTER-SEE NOTES (T.O.) TIP OUT GUTTER WHERE APPLICABLE-SEE PLAN
- TRAFFIC DIRECTIONAL ARROW PAVEMENT MARKINGS
- SIGN AND POST ASSEMBLY. SHOP DRAWINGS REQUIRED.
HC = ACCESSIBLE SIGN
NP = NO PARKING FIRE LANE
ST = STOP
CP = COMPACT CAR PARKING ONLY

CITY OF SHAKOPEE SITE SPECIFIC NOTES:

- RESERVED FOR CITY SPECIFIC NOTES.

SITE AREA TABLE:

SITE AREA CALCULATIONS	EXISTING CONDITION	PROPOSED CONDITION	Revision Summary	
			Revised by:	Date:
BUILDING COVERAGE	SF #DIV/0!	SF #DIV/0!		
ALL PAVEMENTS	SF #DIV/0!	SF #DIV/0!		
ALL NON-PAVEMENTS	SF #DIV/0!	SF #DIV/0!		
TOTAL SITE AREA	SF #DIV/0!	SF #DIV/0!		
IMPERVIOUS SURFACE	SF #DIV/0!	SF #DIV/0!		
EXISTING CONDITION	SF #DIV/0!			
PROPOSED CONDITION	SF #DIV/0!			
DIFFERENCE (EX. VS PROP.)	SF #DIV/0!			



Know what's below.
Call before you dig.



1" = 30'-0"
0 30'-0"

C2.0