

Jennifer Lane and Timber Trails Open House Feedback



SHAKOPEE | MN

COMMUNITY PRIDE SINCE 1857

City of Shakopee | 485 Gorman St., Shakopee MN 55379 | 952-233-9300 | www.ShakopeeMN.gov

Jennifer Lane Existing Conditions



Timber Trails Existing Conditions



SHAKOPEE | MN

COMMUNITY PRIDE SINCE 1857

City of Shakopee | 485 Gorman St., Shakopee MN 55379 | 952-233-9300 | www.ShakopeeMN.gov

Online Survey

- Residents were invited to take survey via postcard, doorhanger and city emails
- Residents were asked questions about both Timber Trails & Jennifer Lane park
- 24 survey respondents
 - 23 lived 0-5 minutes from Jennifer Lane Park
 - 1 lived 5-10 minutes from Jennifer Lane Park

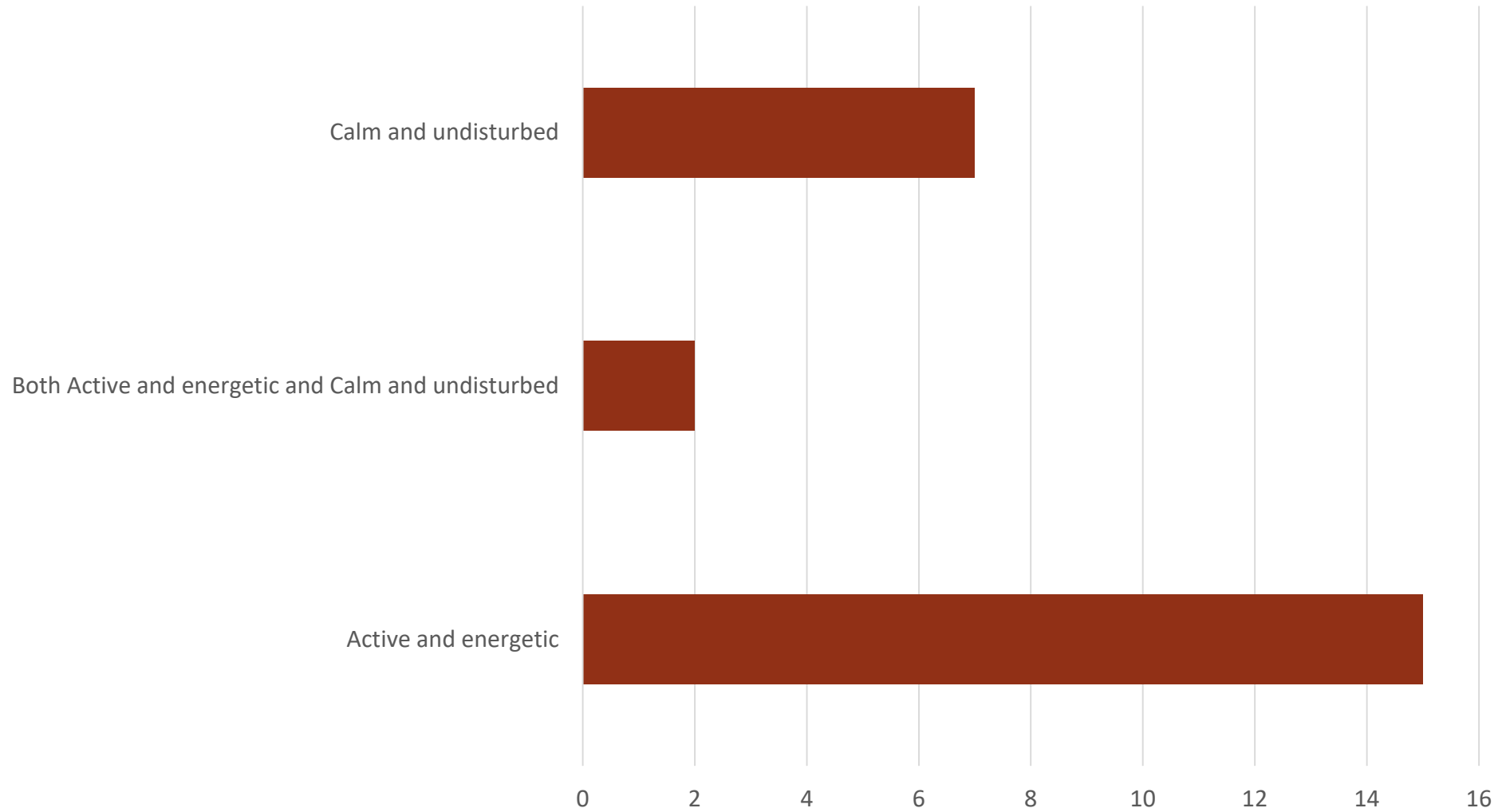


SHAKOPEE | MN

COMMUNITY PRIDE SINCE 1857

City of Shakopee | 485 Gorman St., Shakopee MN 55379 | 952-233-9300 | www.ShakopeeMN.gov

When I visit this park, I want to feel:

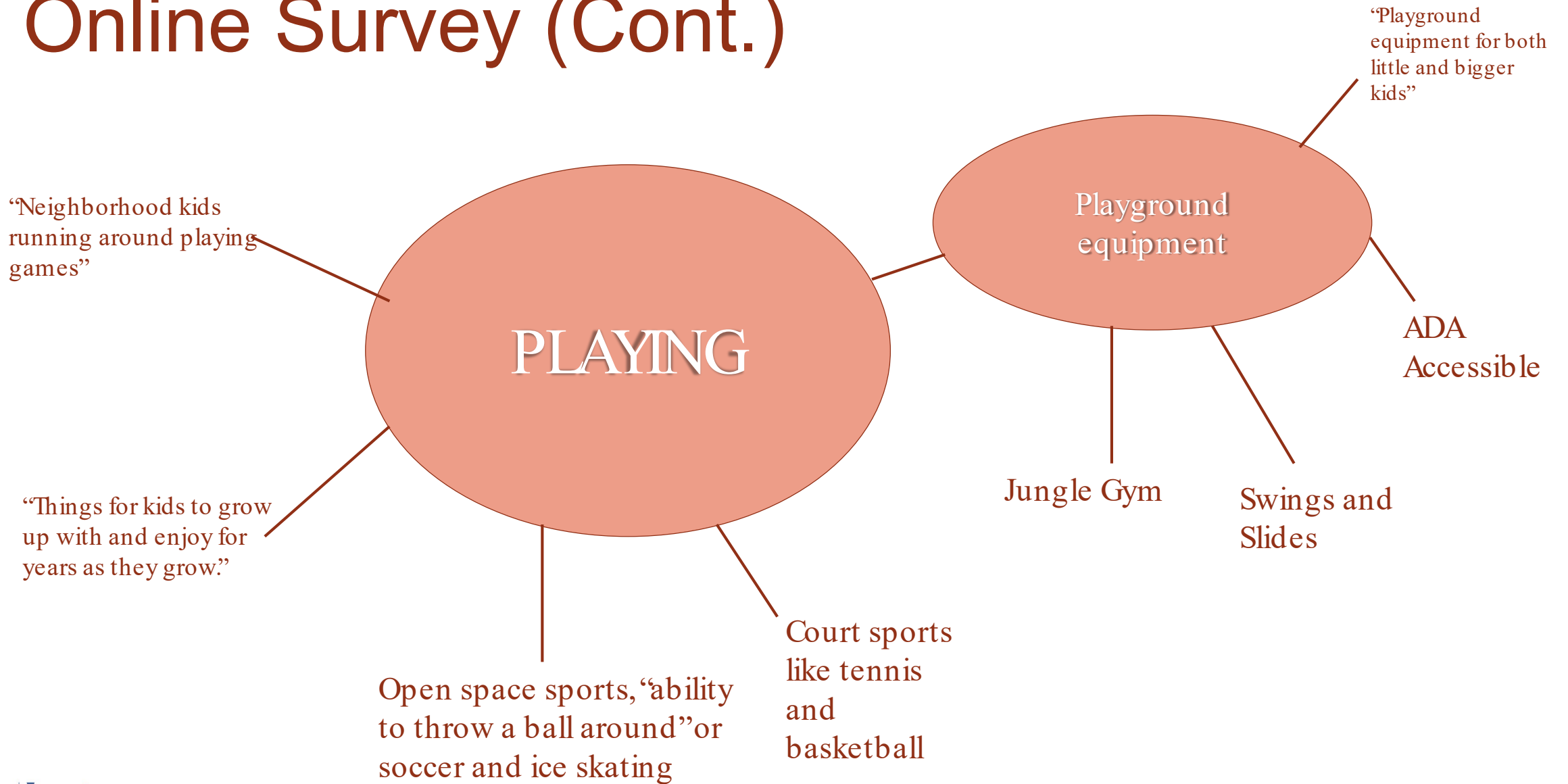


SHAKOPEE | MN

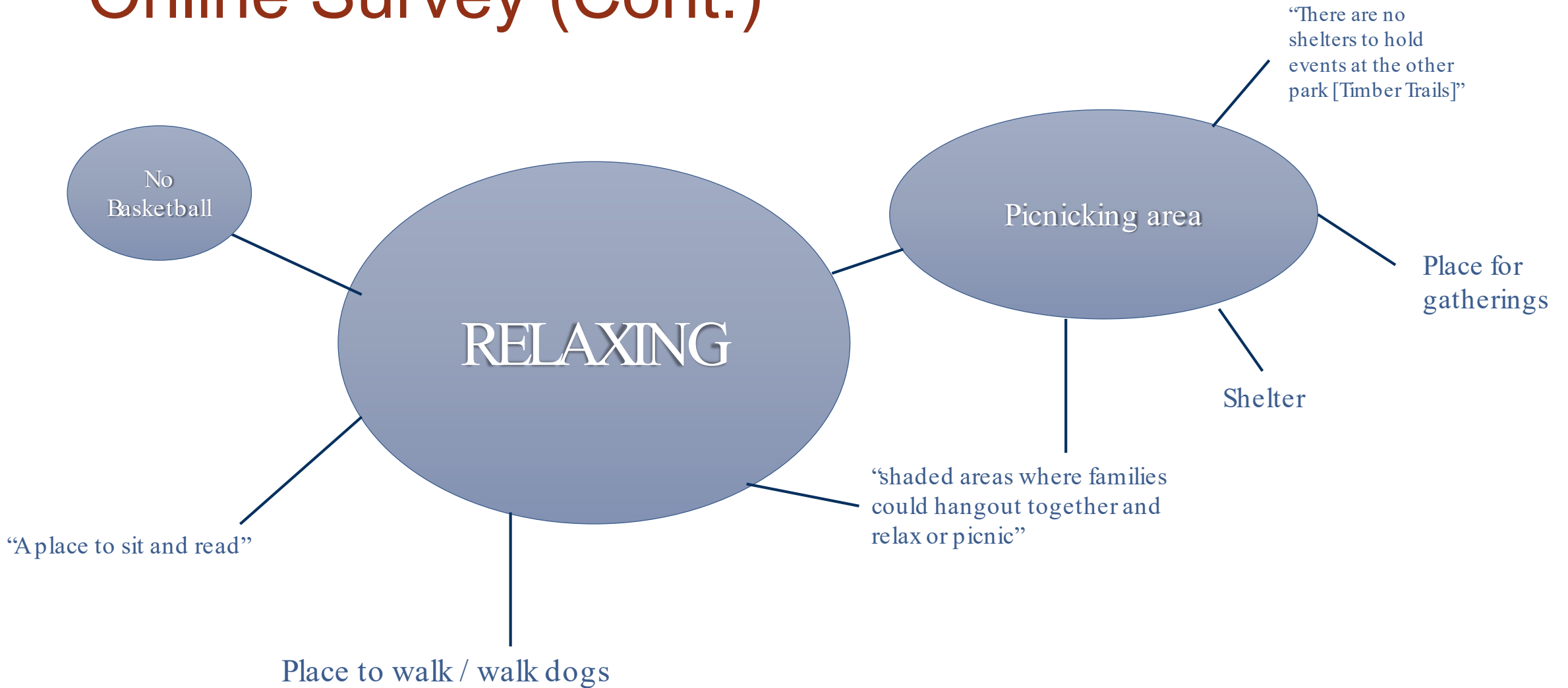
COMMUNITY PRIDE SINCE 1857

City of Shakopee | 485 Gorman St., Shakopee MN 55379 | 952-233-9300 | www.ShakopeeMN.gov

Online Survey (Cont.)



Online Survey (Cont.)



Open House



- 36 Residents and 6 staff attended the open house which was held outdoors at Timber Trails Park
- Nearly every resident on the cul-de-sac where the Jennifer Lane Park will be attended
- Residents and families participated in a variety of activities to offer feedback on the parks

Design a Park



Families got scaled icons depicting different activities and laid them out on the parkland at Jennifer Lane.

Not every icon could fit on the page, so residents had to choose which activities are most important to them and their families.



SHAKOPEE | MN

COMMUNITY PRIDE SINCE 1857

City of Shakopee | 485 Gorman St., Shakopee MN 55379 | 952-233-9300 | www.ShakopeeMN.gov

Most used icons for Jennifer Lane

Number indicates times used on the design a park activity

Sport Court



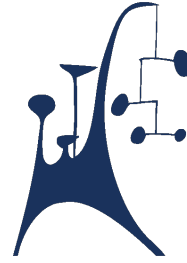
6

Picnic Bench / Grill



7

Public Art



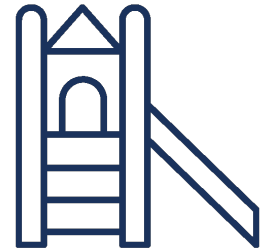
8

Big Kid Playground



10

Little Kid Playground



4

Wildflowers / Native grass



12

Covered Shelter



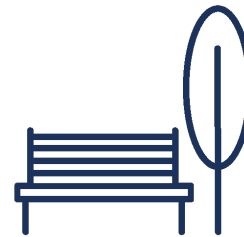
4

Community Garden



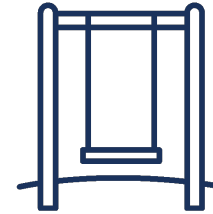
2

Bench



23

Swings



8

Lights



17

A Day at Jennifer Lane Park

A DAY AT JENNIFER LANE PARK

Imagine the park on Jennifer Lane is already built and you spend all the nice days of Summer there... tell us what that's like!

Yesterday, my family and I went to the park on Jennifer Lane.

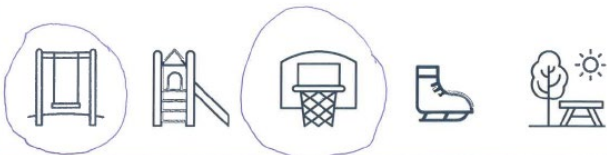
My favorite way to get to the park is by walk.

When I visit the park my favorite things to do are play basketball
or catch with a football.

The park on Jennifer Lane is different from other parks because new and we help design it.

Whenever I visit this park, I always feel so happy + exhausted!

I can't wait to go to the park again tomorrow!



- Residents used a fill-in-the-blank form to imagine what a day at Jennifer Lane might be like when the park is built
- Common activities were playing on a **playground** or **playground equipment** , **basketball** , playing sports like **soccer** or **football** and a **zipline**

Conversations during the open house

- Desired opportunities for play for kids of all ages
 - Many of the families have bigger kids and/or play equipment in their yards
- Concern about parking + street speeds / traffic
- Also desired quiet space and to be mindful that it is next to people's homes
- Wanted a bus stop area with lighting



SHAKOPEE | MN

COMMUNITY PRIDE SINCE 1857

City of Shakopee | 485 Gorman St., Shakopee MN 55379 | 952-233-9300 | www.ShakopeeMN.gov

Jennifer Lane Concepts



SHAKOPEE | MN
COMMUNITY PRIDE SINCE 1857

City of Shakopee | 485 Gorman St., Shakopee MN 55379 | 952-233-9300 | www.ShakopeeMN.gov

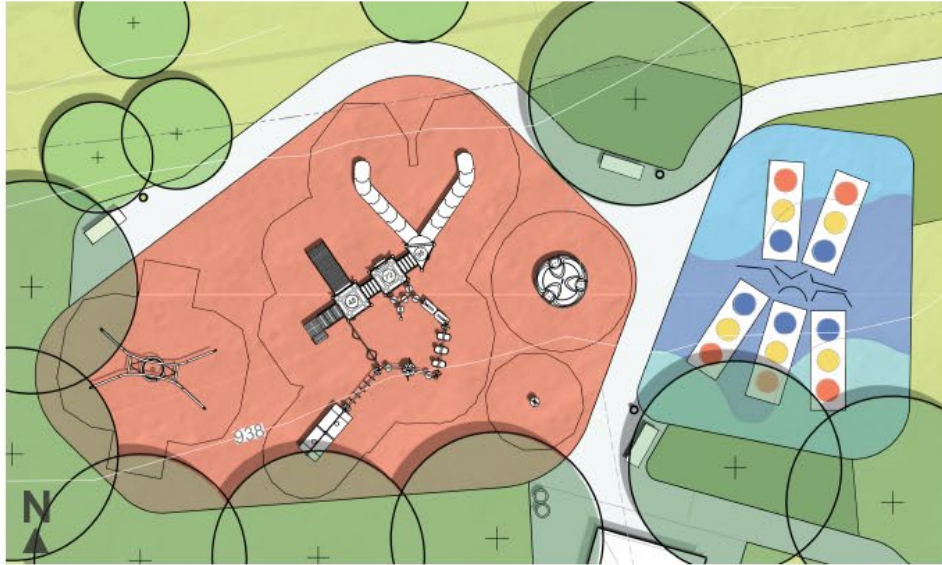
Concept 1 - Active Play



- Features:**
- A** Native Plantings
 - B** Plant Bed
 - C** School Bus Stop
 - D** Bankshot Court
 - E** Bench
 - F** Light Poles
 - G** Updated Playground (featuring inclusive play and a lot of active variety)
 - H** 16'x16' Park Shelter
 - I** U6-sized Open Play Field
 - J** Concrete Walk
 - K** Park Sign
 - L** Fence
 - Canopy Trees
 - Ornamental Trees
 - Evergreen Trees
 - Turf Lawn
 - Ornamental Plant Bed
 - Natural Planting

Concept 1 - Playground Concept

Jennifer Lane Neighborhood Park | August 2020



Concept 2 - Passive Play



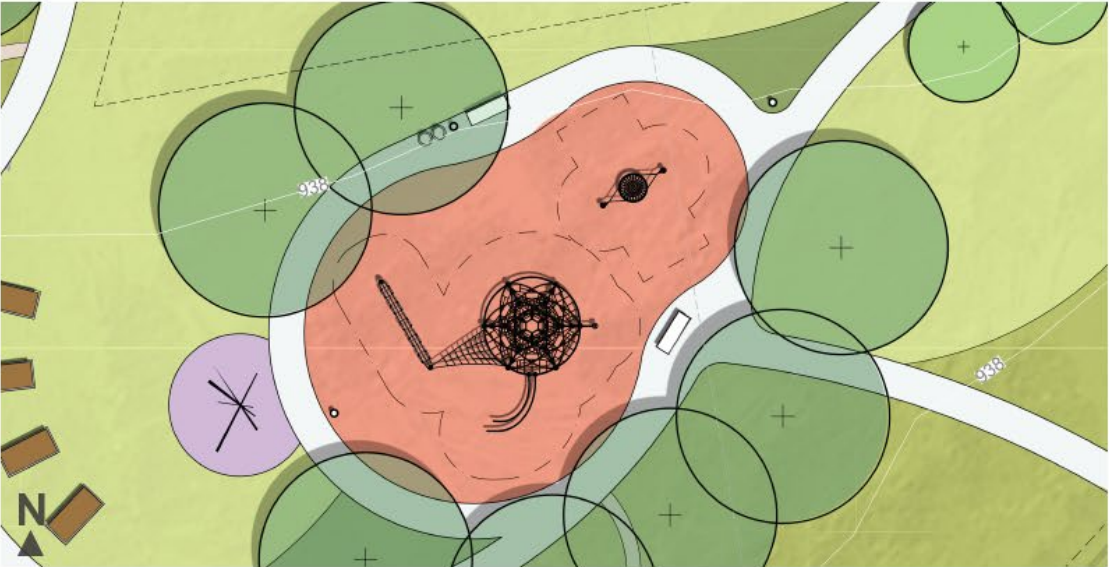
Features:

A Native Plantings	C Updated Playground (featuring unique play)
B Plant Bed	H Community Art / Sculpture
G School Bus Stop	I Community Gardens
D Flexible Play Lawn	J Orchard Walk (wood chip path)
E Bench	K Park Sign
F Light Poles	L Fence
Canopy Trees	Turf Lawn
Ornamental Trees	Ornamental Plant Bed
Evergreen Trees	Natural Planting



Concept 2 - Playground Concept

Jennifer Lane Neighborhood Park | August 2020



Timber Trails Playground Concepts

Existing swings would remain



SHAKOPEE | MN

COMMUNITY PRIDE SINCE 1857

City of Shakopee | 485 Gorman St., Shakopee MN 55379 | 952-233-9300 | www.ShakopeeMN.gov

Option 1

Traditional Burke Play Structure

PROPOSAL #:100-131829-1

TIMBER TRAILS

Burke
PLAY THAT MOVES YOU.
BCIBURKE.COM • 800.266.1250



SHAKOPEE | MN

COMMUNITY PRIDE SINCE 1857

City of Shakopee | 485 Gorman St., Shakopee MN 55379 | 952-233-9300 | www.ShakopeeMN.gov

Option 2

Iconic Berliner “Celle” Structure



SHAKOPEE | MN

COMMUNITY PRIDE SINCE 1857

City of Shakopee | 485 Gorman St., Shakopee MN 55379 | 952-233-9300 | www.ShakopeeMN.gov

Questions?
Contact Senior Planner,
PeggySue Imihy at
pimihy@shakopeemn.gov



SHAKOPEE | MN

COMMUNITY PRIDE SINCE 1857

City of Shakopee | 485 Gorman St., Shakopee MN 55379 | 952-233-9300 | www.ShakopeeMN.gov