

Filename: CRETEX_CROSSDOCK\CRETEX_CROSSDOCK-A1

70th STREET W

CRETEX AVENUE
(VACATED)

INDUSTRIAL
WPT REIT

ARCHITECT CERTIFICATION:
I HEREBY CERTIFY THAT THIS PLAN,
SPECIFICATION OR REPORT WAS
PREPARED BY ME OR UNDER MY DIRECT
SUPERVISION AND THAT I AM A DULY
LICENSED ARCHITECT UNDER THE
LAWS OF THE STATE OF MINNESOTA.

PRELIMINARY
NOT FOR
CONSTRUCTION

RJRyan
Construction, Inc.
Commercial Design and Construction
1100 Minnesota Heights Blvd. Ph: 651-681-0200
Mendota Heights, MN 55120 Fax: 651-681-0235

CRETEX CROSSDOCK
Shakopee, Minnesota

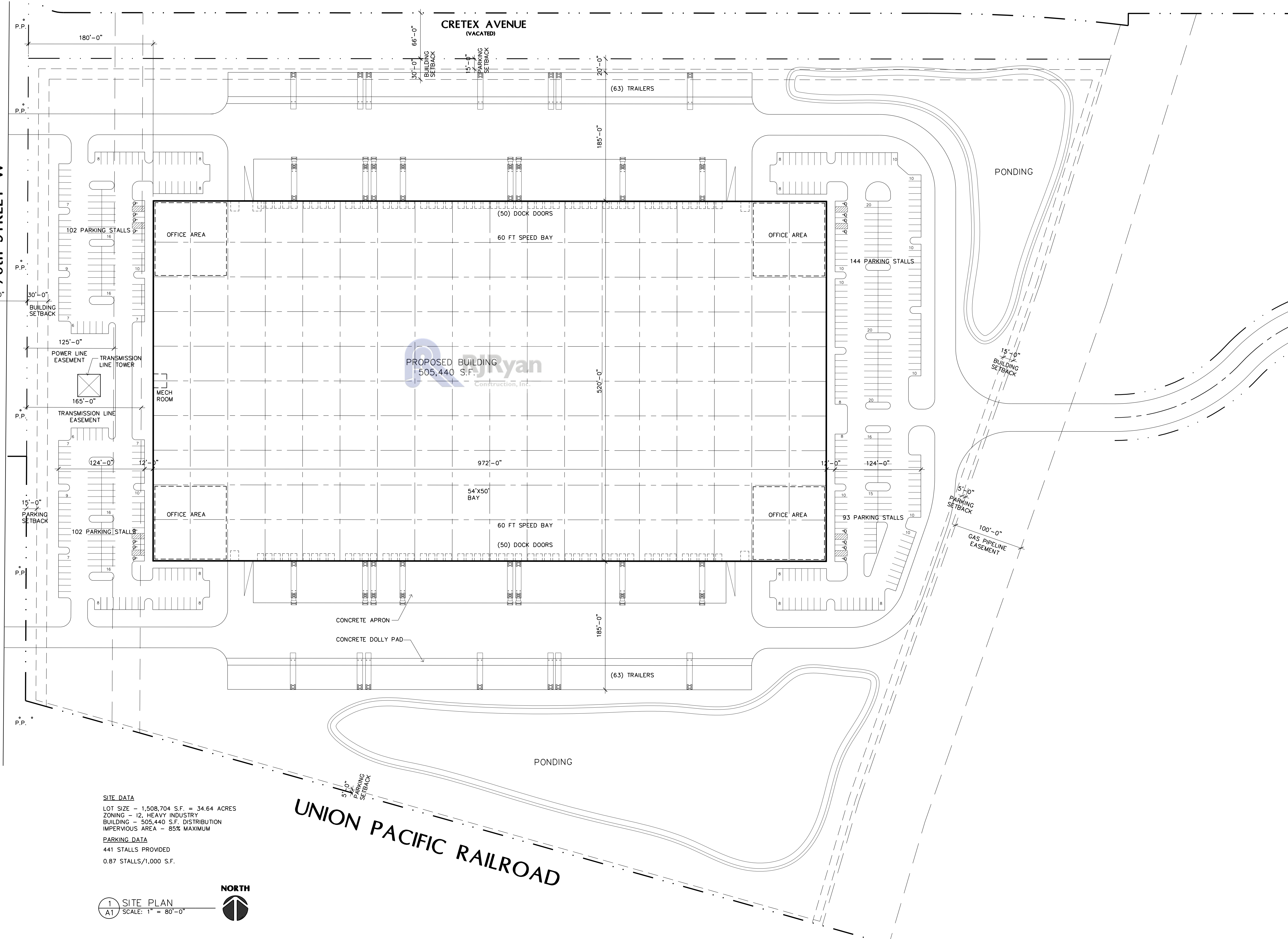
Revisions	
10/27/20	PRELIMINARY

SITE PLAN

Sheet Number

A1

Project No. 200916-2



SITE DATA
 LOT SIZE - 1,508,704 S.F. = 34.64 ACRES
 ZONING - I-2, HEAVY INDUSTRY
 BUILDING - 505,440 S.F. DISTRIBUTION
 IMPERVIOUS AREA - 85% MAXIMUM

PARKING DATA
 441 STALLS PROVIDED
 0.87 STALLS/1,000 S.F.

1 SITE PLAN
 A1 SCALE: 1" = 80'-0"

