

Minnesota River Cultural Corridor and Riverbank Stabilization

PREPARED BY DEPARTMENT OF PLANNING & DEVELOPMENT & PUBLIC WORKS DEPARTMENT

Minnesota River Cultural Corridor and Riverbank Stabilization

PREPARED BY DEPARTMENT OF PLANNING & DEVELOPMENT & PUBLIC WORKS DEPARTMENT



Minnesota Riverbank Comparison 1937 to 2018



PARTNERS INVOLVED

- City of Shakopee
- Minnesota Department of Natural Resources
- Army Corp of Engineers
- Scott County
- Hennepin County (Three Rivers Park District)
- Shakopee Mdewakanton Sioux Community

FUNDING

- City is requesting \$11,753,000 from the State bonding bill for the project.
- City would match state bonding funds from multiple local sources
- Funding would be utilized for engineering, design and construction (September 2020-December 2024).



PROJECT NEED

This project would reduce flooding and erosion risk to critical municipal infrastructure and significant cultural resources. This has been identified as a critical local need and of regional and statewide significance.

- The Minnesota Department of Natural Resources lists the Minnesota River as an impaired body of water. Riverbank erosion is one of the many sources.
- The Minnesota River in Shakopee has eroded the riverbank considerably over the last 100 years, upward of 100 feet near the historic Holmes Street Bridge piers and 40 to 50 feet in the downtown Shakopee area.
- Due to increased flooding events, many river-adjacent facilities are inundated for days to months each year, including the Minnesota Valley State Trail and public parkland. Erosion poses a specific risk to Huber Park, a premier city park.
- Wetter conditions have caused the river to flood more frequently in recent history, which has accelerated erosion along riverbank.
- At the current rate of erosion, by 2060, we could lose an additional 50 feet on each side of the river, resulting in more than 100,000 cubic yards (or 6,000 truckloads) of earth being consumed by the river.

PROJECT SITE CONTEXT

- Of the 353 miles of the Minnesota River which runs through the state, 330 of them are upriver of Shakopee.
- Flooding events that impact Shakopee are a consequence of practices upstream. Less than 1 percent of the water flowing into the river is from Shakopee.

SANITARY SEWER LINE

- Erosion also poses a risk to a critical municipal trunk sanitary sewer line that runs parallel along the river for approximately 8,800 feet.
- Trunk sewer line is a legacy Metropolitan Council line, inherited by Shakopee and critical to thousands of residents.

Minnesota River Cultural Corridor and Riverbank Stabilization

PREPARED BY DEPARTMENT OF PLANNING & DEVELOPMENT & PUBLIC WORKS DEPARTMENT

CULTURAL FACILITIES

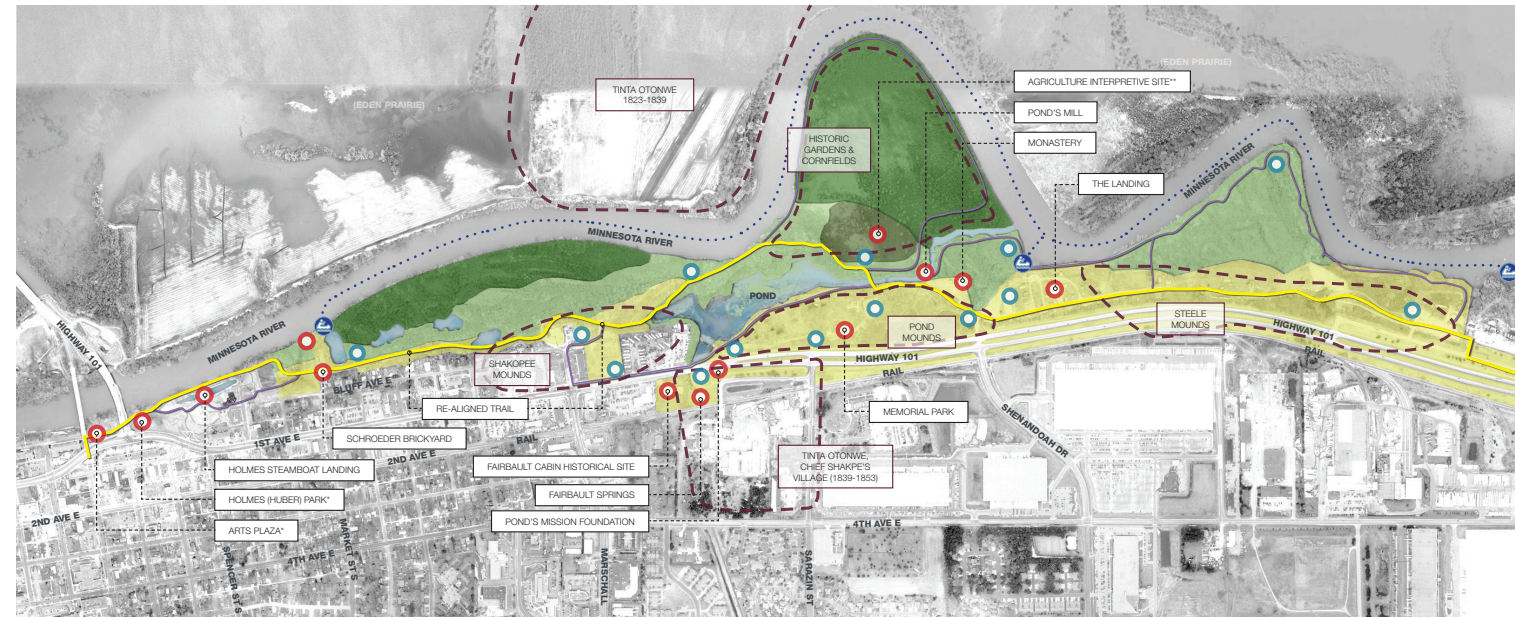
The Minnesota River Valley is home to significant cultural resources for the Dakota people and European settlers. The project would preserve and protect many historic sites along the Minnesota River including:

- Holmes Street Bridge - a nationally registered historic site.
- The Landing - an historic heritage site which includes many original settler structures and serves as a major historical interpretation site.
- Dozens of Dakota burial mounds in what was the area of their original settlement site. This area holds great significance to Shakopee Mdewakanton Sioux Community and many other Native American tribal nations.



THE RIVERFRONT

- = kayak launch* **
- = main interpretive site
- = point of etiquette reminder
- = river kayak / canoe trail**
- = shakopee riverfront cultural trail
- = proposed trail additions / connections
- = approximate areas of known and identified / documented cultural resources
- = restored floodplain forest
- = restored oak savanna



SATELLITE IMAGE SOURCE: ESRI & GOOGLE EARTH (NOTE: ESRI AERIAL FOR SCOTT COUNTY ENDS AT SCOTT COUNTY BOUNDARIES; AERIAL FROM GOOGLE EARTH HAS BEEN UNDERLAYED TO ILLUSTRATE GREATER CONTEXT OF SITE)
 * = NEW ELEMENT TO RIVERFRONT; SEE HOLMES (HUBER) PARK CONCEPT PLAN
 ** = NEW ELEMENT TO RIVERFRONT; SEE MEMORIAL PARK CONCEPT PLAN



HUBER PARK
 MASTER PLAN CONCEPT RENDERINGS

