

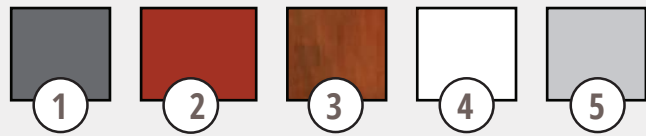
DESIGN STANDARDS | Materials and General Design Requirements

Materials



- A** Painted steel. Text to be vinyl applied to surface unless otherwise noted.
- B** Reinforced, formed concrete base. Natural concrete color. 1" beveled edge.
- C** 1/8" thickness Brushed Aluminum with silk screen printing.
- D** 3/8" thickness Brushed Aluminum letters. Placed minimum 1/2" from sign surface.
- E** Kasota Stone.
- F** Painted Dimensional Steel
- G** Direct print to vinyl. Vinyl is wrapped around 1/8" thick aluminum sheet*
- H** Kasota Stone Cap.

Colors



- 1** Metallic Gray | Matthews #MP18202 Quartz Grey Metallic
- 2** Shakopee Red | PANTONE 484 C
- 3** Weathered Steel | Modern Masters Oxidizing Iron Paint (ME208)
- 4** White | Matthews #MP432651 Toque White
- 5** Metallic Silver | Matthews #MP18102 Legacy Silver Metallic

Notes:
 All painted components to be clear coated with satin finish. Oxidized paint to be finished with Permacoat Xtreme (AM204).

All drawings are illustrative to show design concept. Fabricator to provide refined design and any required structural engineering details.

Sign Placement Requirements

- All Signs must be a minimum of 2-ft from the edge of trails.
- All Signs should be a minimum of 2-ft from back of curb , but should be 8-ft from back of curb when possible for snow storage.
- For roads with speeds greater than 30 MPH, all signs should be out of the required clear distance based on MN MUTCD and city requirements.

Sign Design Requirements

- Drawings Illustrate Design Intent. Fabricator to provide final design and engineering of anchoring, fasteners, steel thickness, structural components, base plates, and hardware.
- Provide Adequate drainage from top of concrete base.

Symbology

Symbols should be used to clearly identifying specific activities which are related to the specific sign or incorporated along a trail or within a park.

Monument Signs should highlight specific activities associated with the park or trail. Directional signs should include symbols which illustrate a key destination in a simple,concise manner.

The City should adopt a set of symbols, similar to the examples below, to be used in Park & trail signage. The international symbol for accessibility should be used, whenever possible, to direct visitors to accessible facilities and programs.



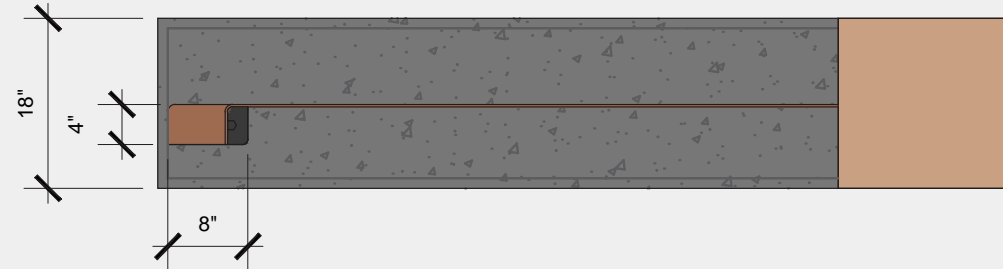
Vierling Greenway Branding
 Symbols for key areas of the park system, greenways, and trails should be created to increase brand identity and improve system wayfinding.

These symbols are cutout from the sign material or printed directly to the sign.

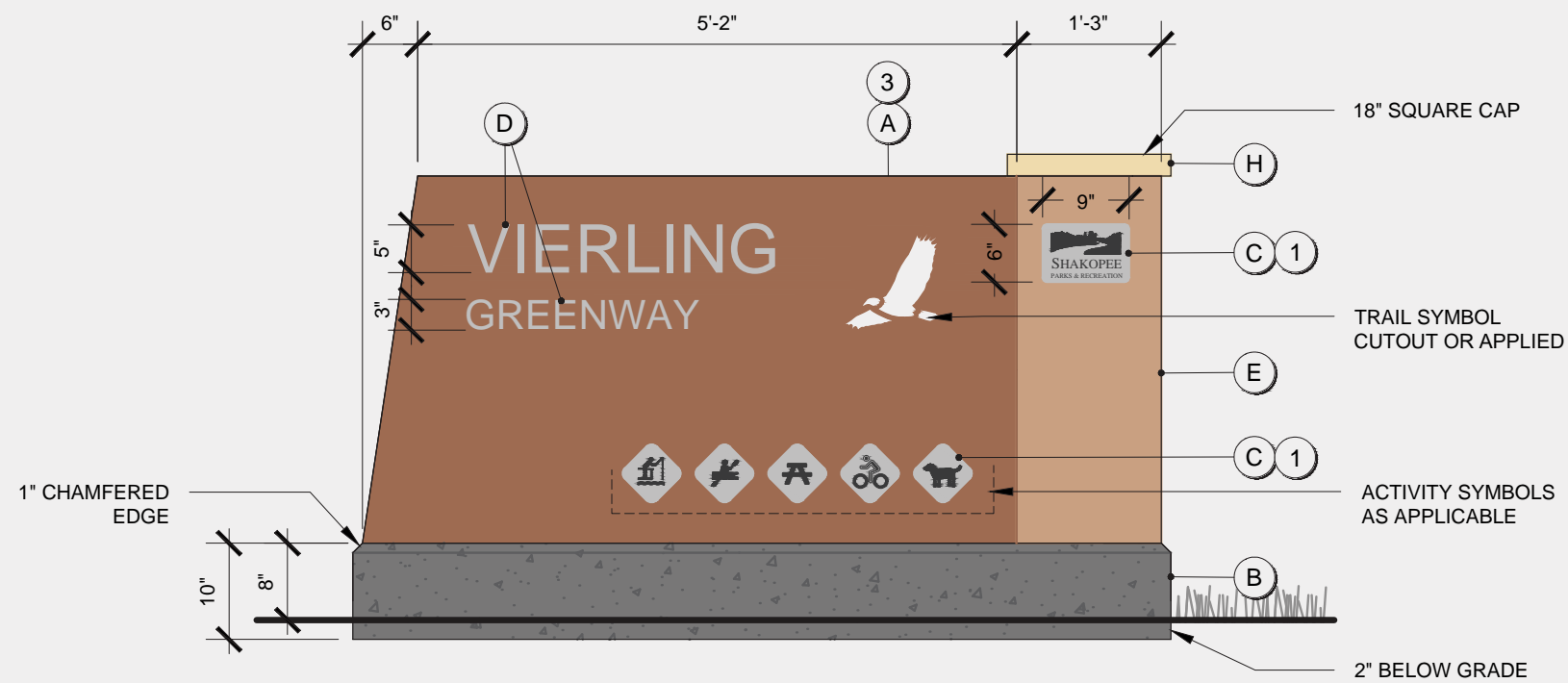
DESIGN STANDARD | Monument Sign Option A (S1-A)

Notes: See Page 9 for material keynote legend, sign placement requirements, and additional design requirements.

PLAN VIEW



ELEVATION VIEW



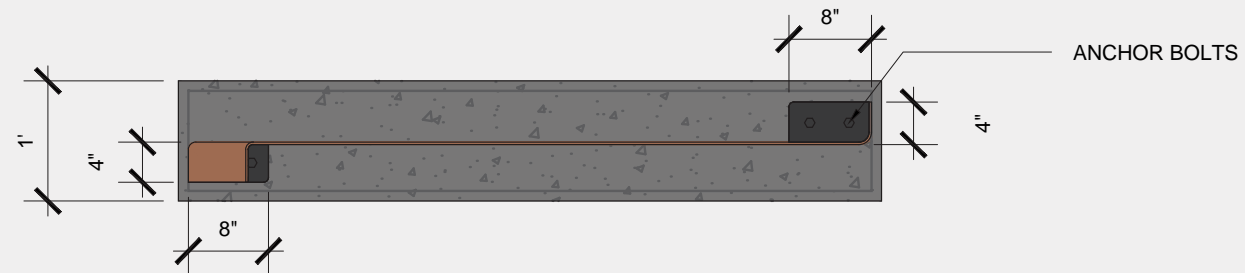
PERSPECTIVE VIEW



DESIGN STANDARD | Monument Sign Option B (S1-B)

Notes: See Page 9 for Material Keynote Legend

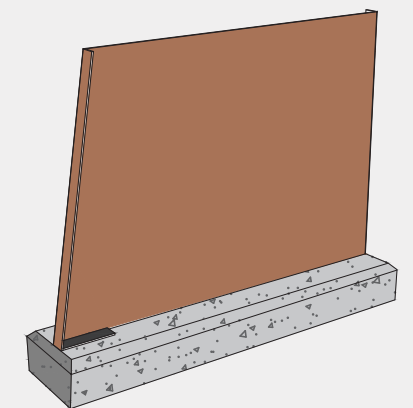
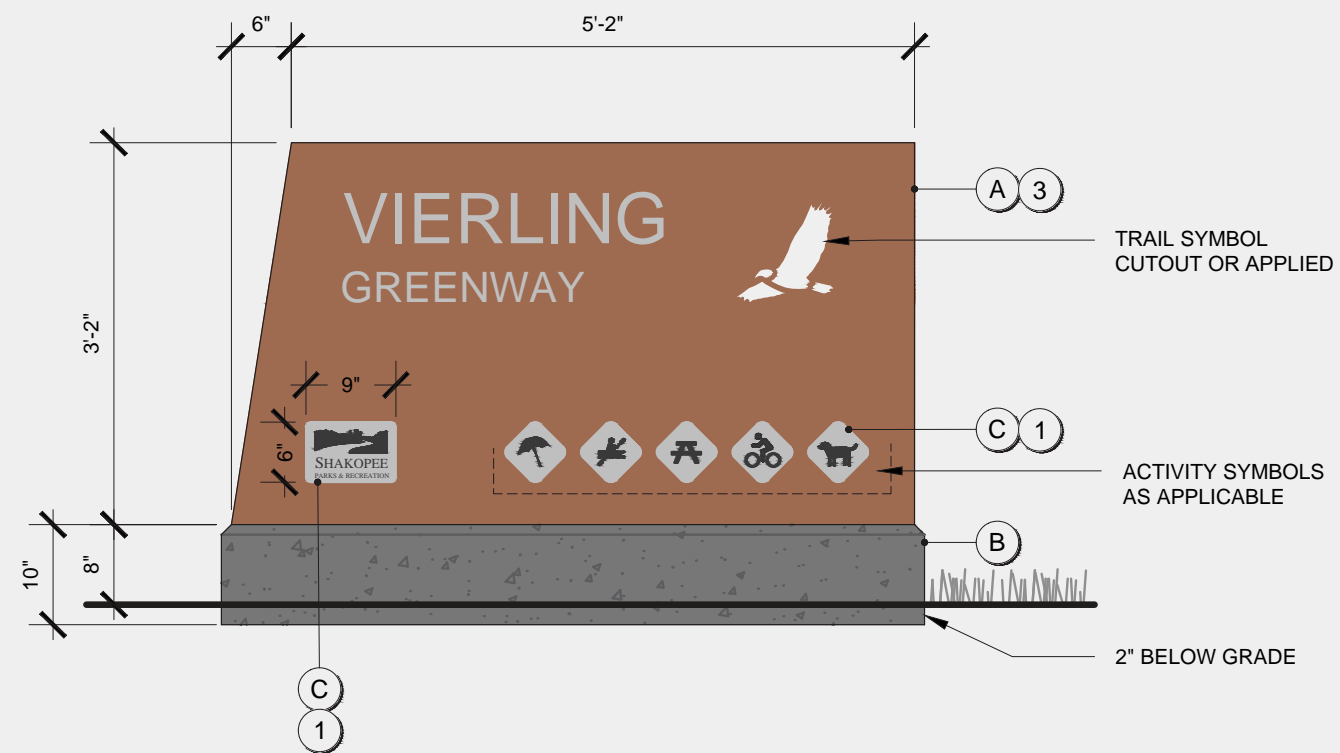
PLAN



PERSPECTIVE VIEW



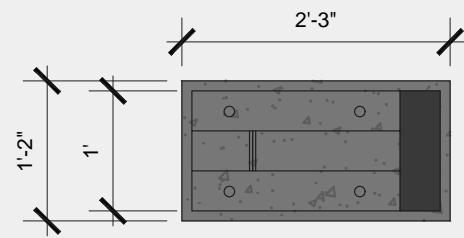
ELEVATION VIEW



DESIGN STANDARD | Monument Sign Option C (S1-C)

Notes: See Page 9 for Material Keynote Legend

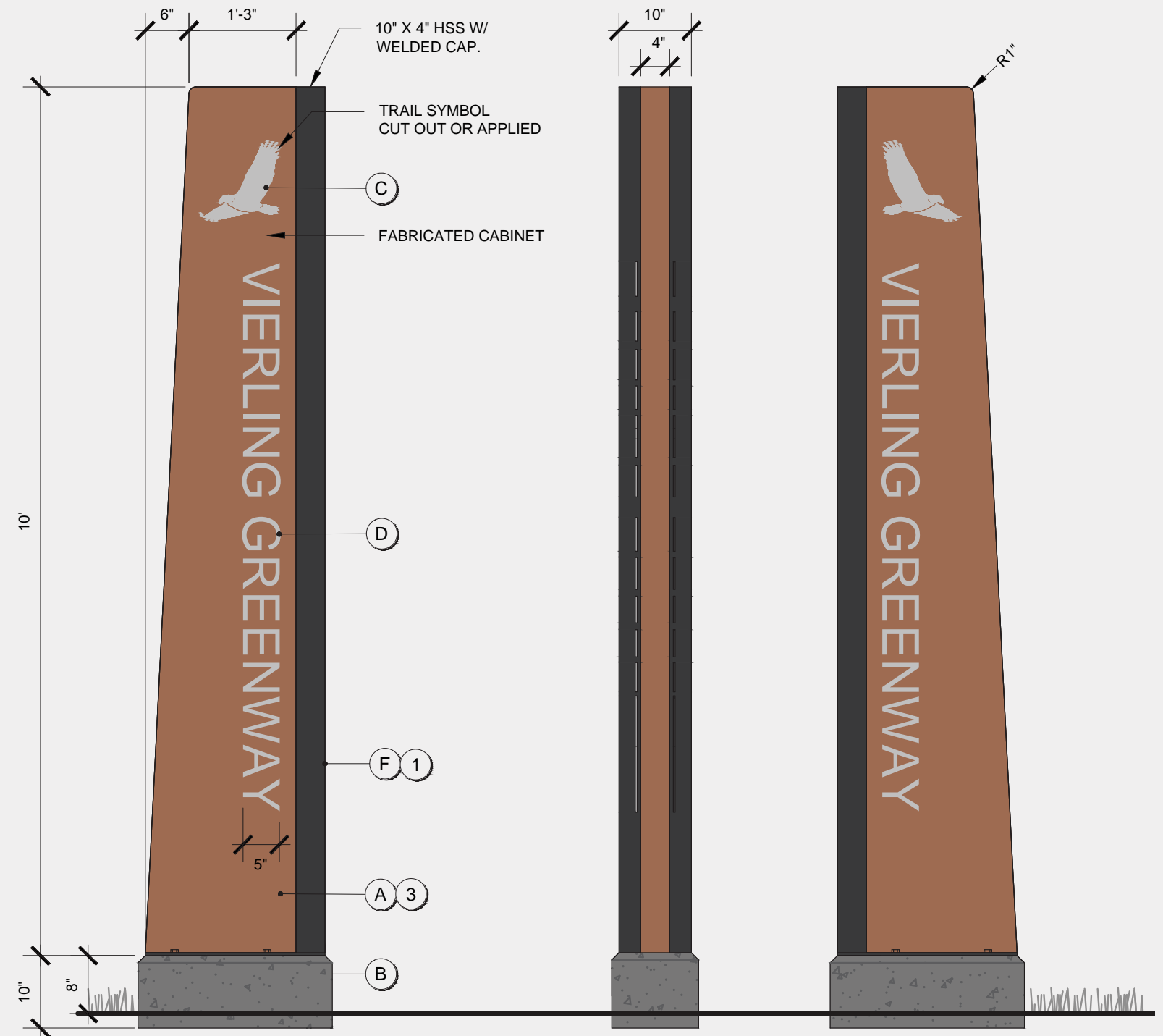
PLAN VIEW



PERSPECTIVE VIEW



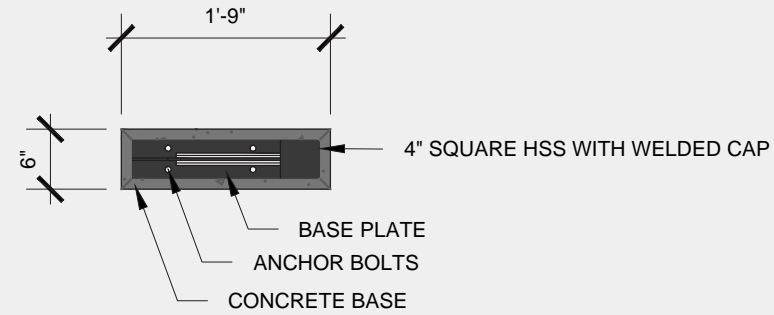
ELEVATION VIEW



DESIGN STANDARD | Directional Sign Option A (S2-A)

Notes: See Page 9 for Material Keynote Legend

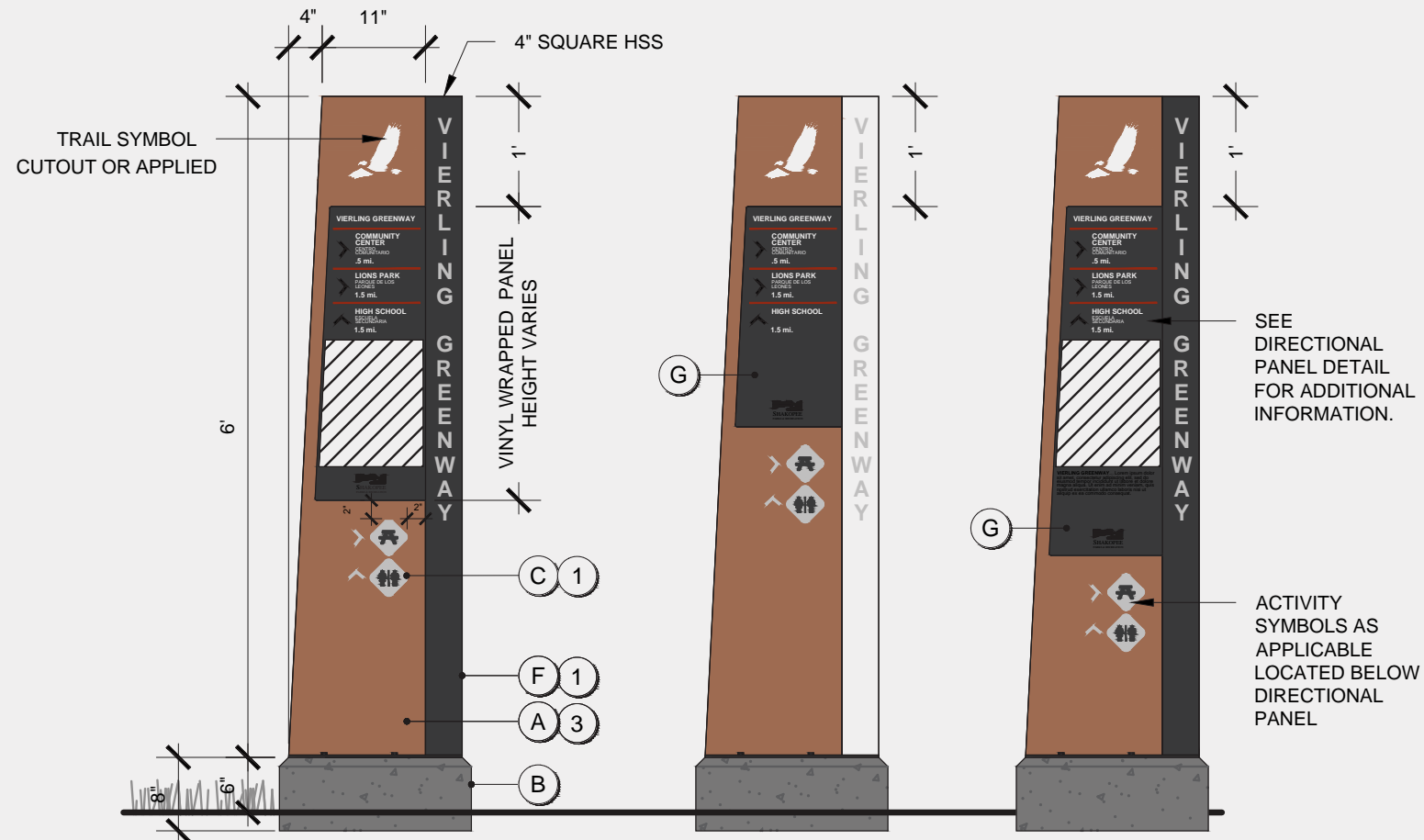
PLAN VIEW



PERSPECTIVE VIEW



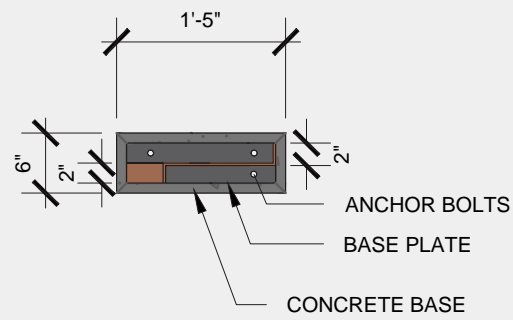
ELEVATION VIEW



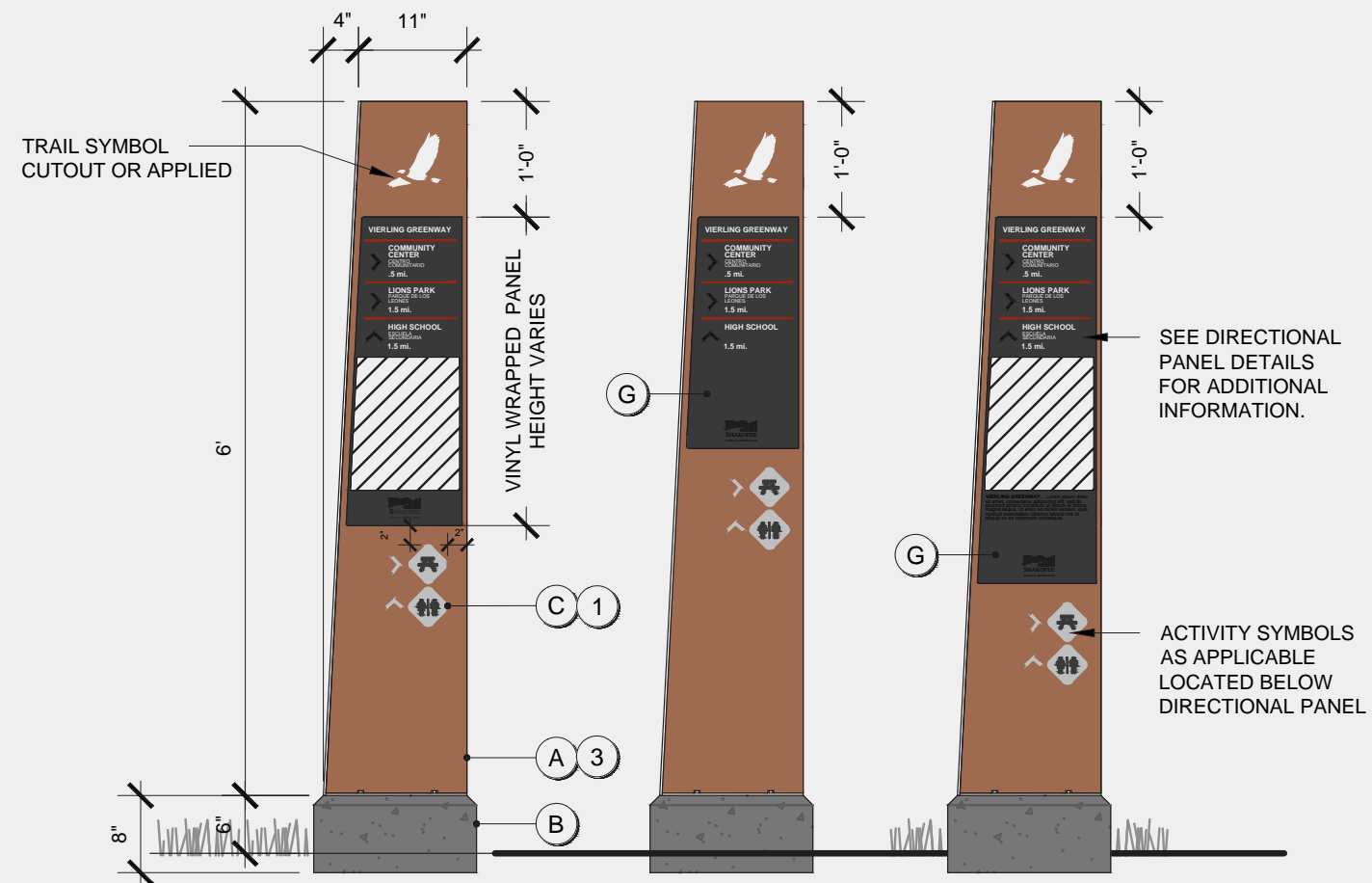
DESIGN STANDARD | Directional Sign Option B (S2-B)

Notes: See Page 9 for Material Keynote Legend

PLAN VIEW



ELEVATION VIEW



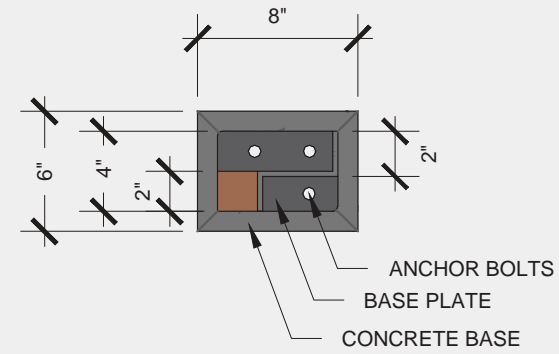
PERSPECTIVE VIEW



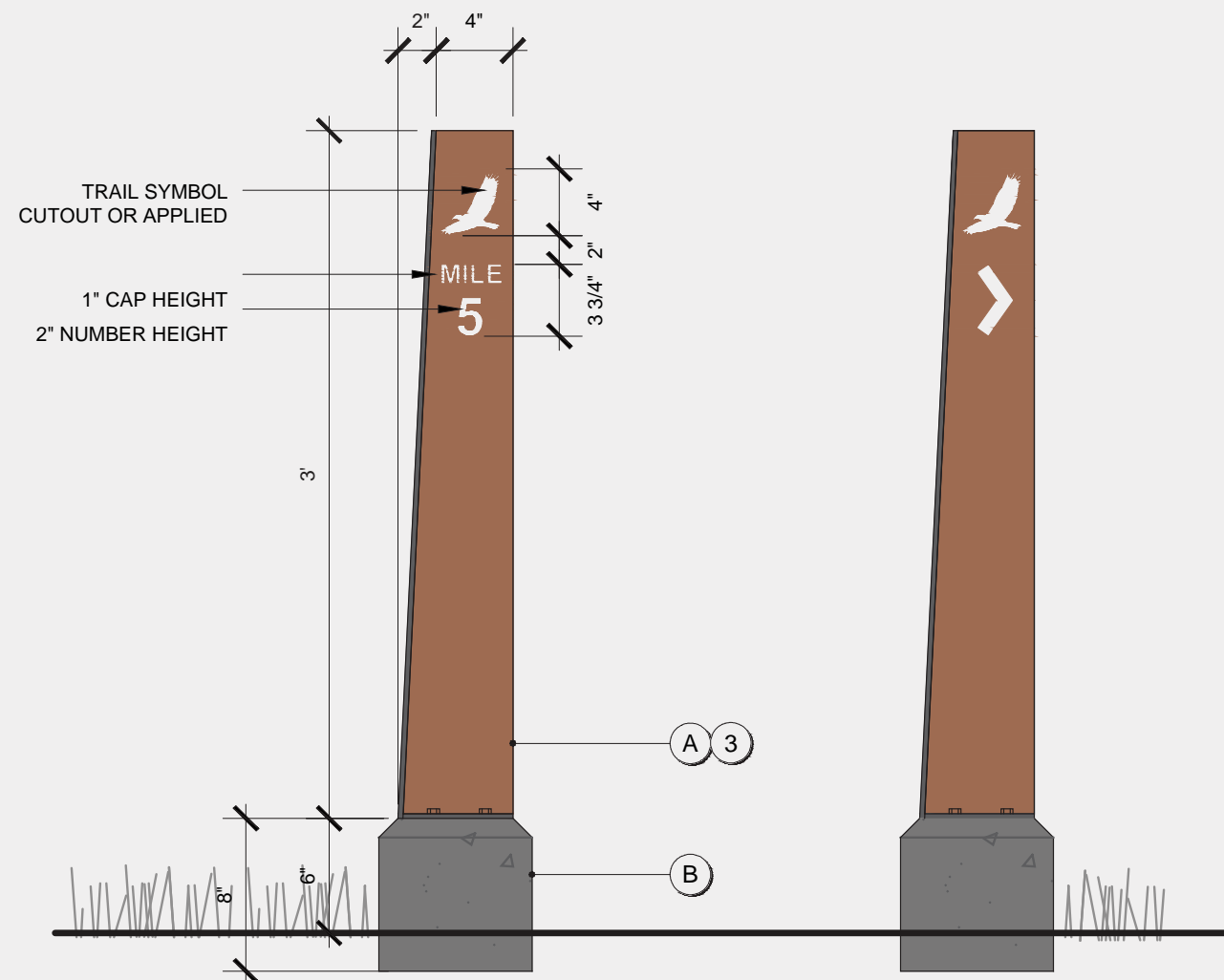
DESIGN STANDARD | Trail Marker (S2-C)

Notes: See Page 9 for Material Keynote Legend

PLAN VIEW



ELEVATION VIEW



PERSPECTIVE VIEW

