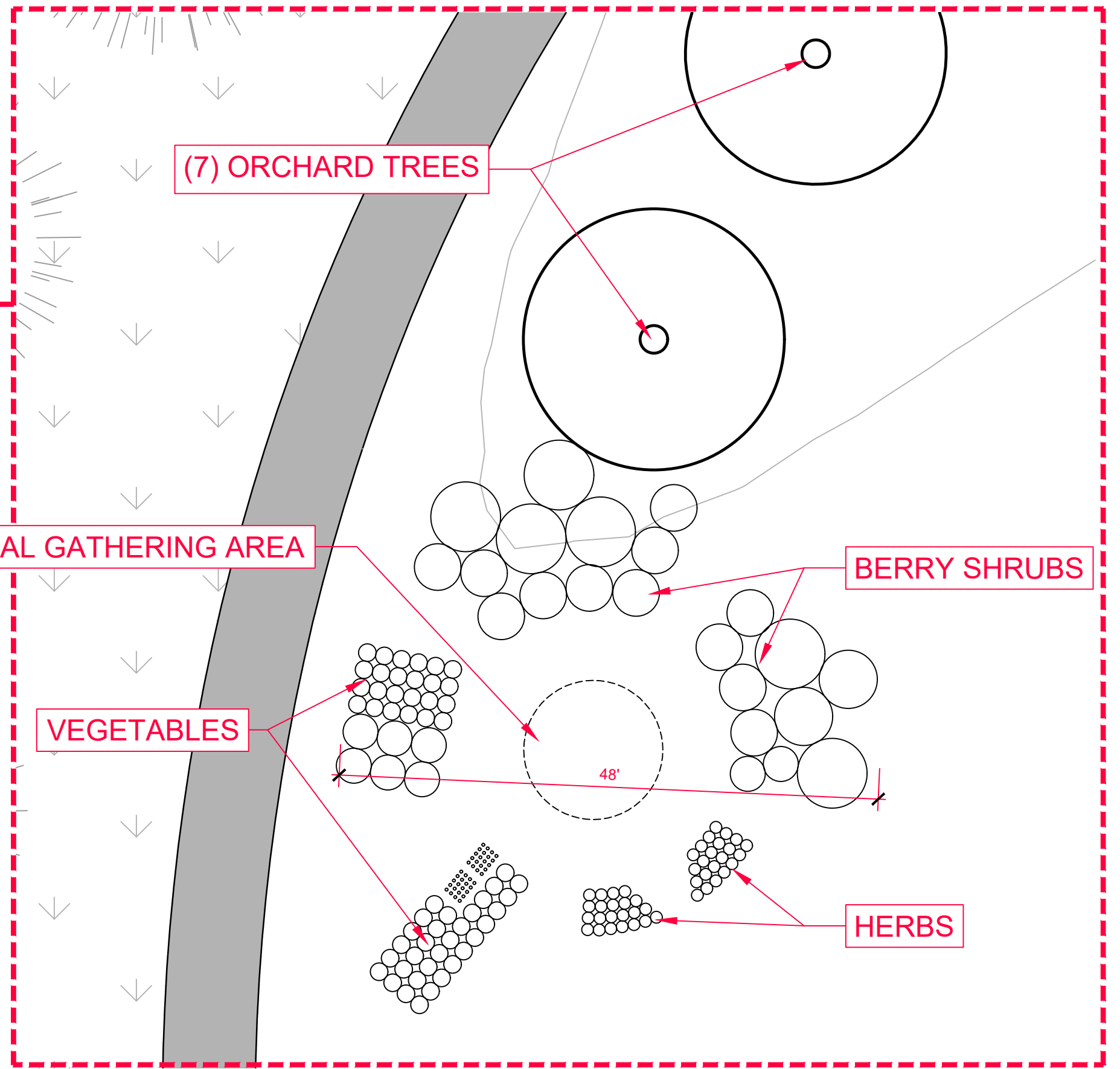
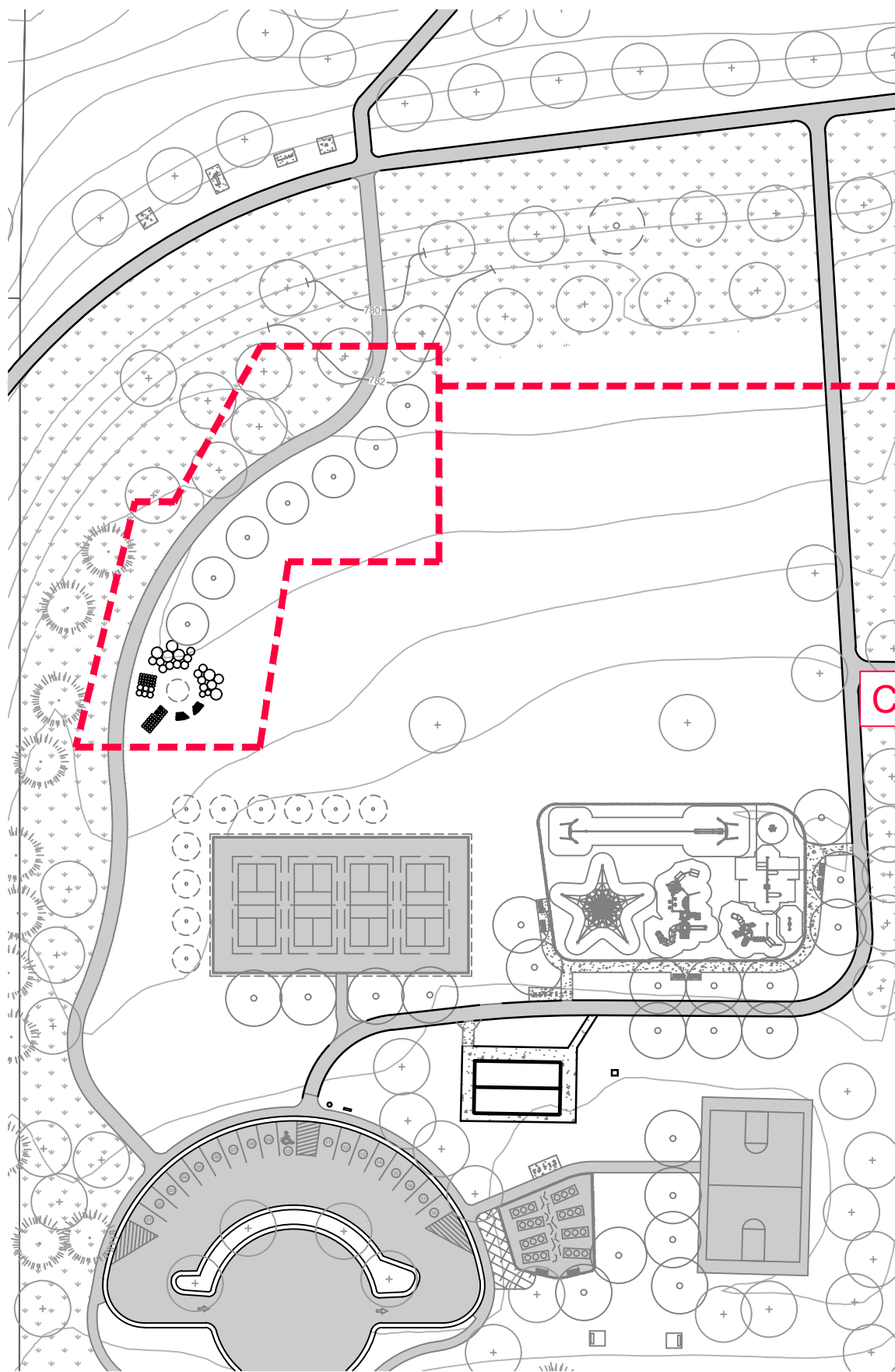


Scenic Heights Edible Landscape

Layout
04-23-2021



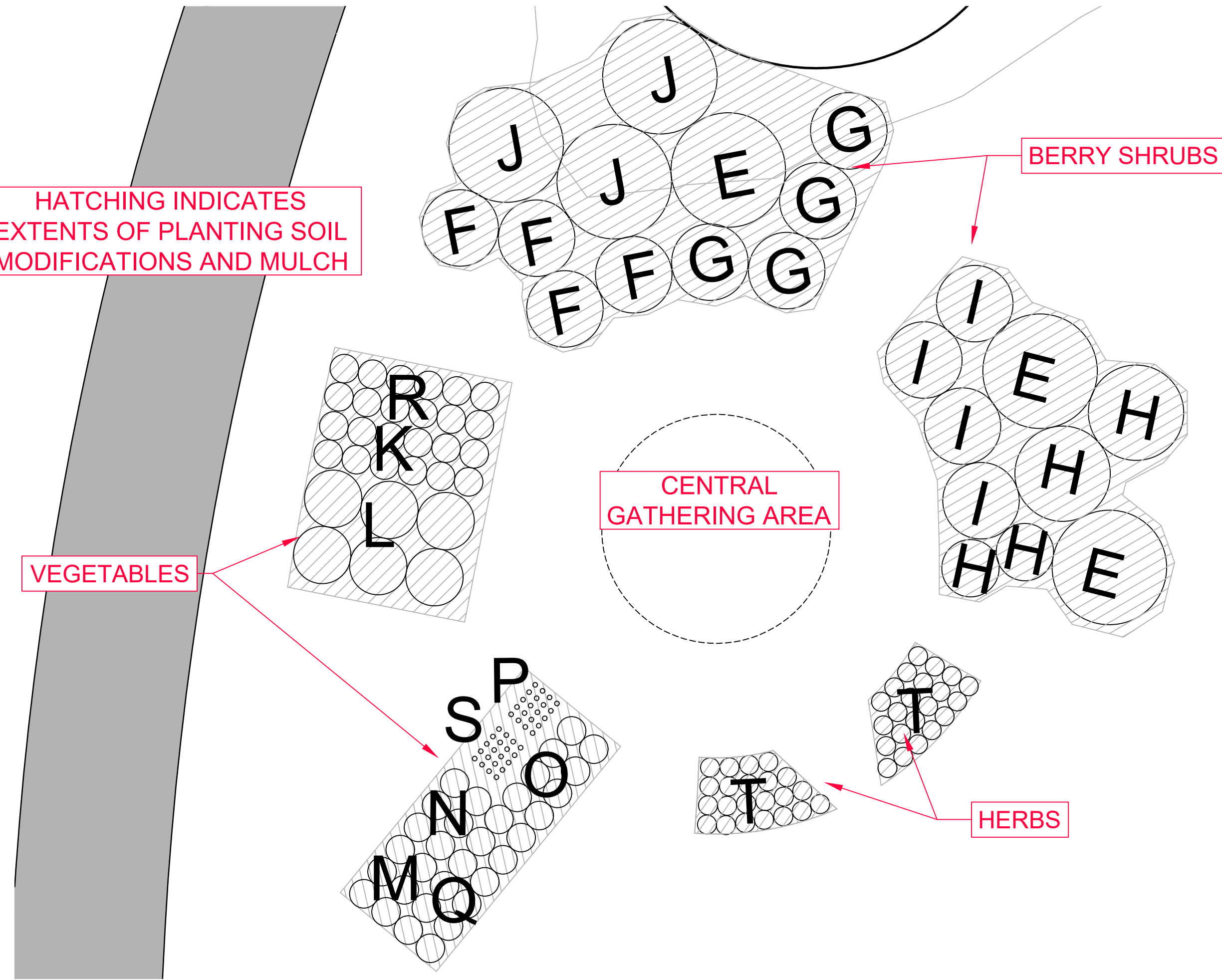
HATCHING INDICATES
EXTENTS OF PLANTING SOIL
MODIFICATIONS AND MULCH

VEGETABLES

BERRY SHRUBS

CENTRAL
GATHERING AREA

HERBS



ORCHARD TREES						
Plan Code	Common Name	Scientific Name	Type of Fruit	Height at Maturity	Width at Maturity	Quantity
A	Apple	Malus 'Honeycrisp'	Apple	15'	12'	2
B	Pear	Pyrus 'Parker'	Pear	15'	12'	1
C	<i>required pollinator</i>	Pyrus 'Summercrisp'	Pear	15'	12'	2
D	Plum	Prunus 'Mount Royal'	Plum	12'	10'	2

EDIBLE SHRUBS						
Plan Code	Common Name	Scientific Name	Use in Kitchen	Height at Maturity	Width at Maturity	Quantity
E	Chokeberry	Aronia melanocarpa	Baking/Jam	6'	6'	3
F	Currant	Ribes 'Redlake'	Berries	5'	4'	4
G	Blueberry	Vaccinium 'Superior'	Berries	4'	4'	4
H	Honeyberry	Lonicera caerulea kamtschatica 'Cinderella'	Berries	3'	3'	2
	<i>required pollinator</i>	Lonicera caerulea 'Tundra'	Berries	5'	5'	2
I	Raspberry	Rubus 'Caroline'	Berries	4'	4'	4
J	Serviceberry	Amelanchier alnifolia 'Regent'	Berries	6'	6'	3

EDIBLE VEGGIES						
Plan Code	Common Name	Use in Kitchen	Spacing	Annual vs. Perennial	Quantity	
K	Asparagus	Vegetable	1.5'	Perennial	12	
L	Rhubarb	Vegetable	3'	Perennial	6	
M	Broccoli	Vegetable	1.5'	Annual	6	
N	Brussel Sprouts	Vegetable	1.5'	Annual	6	
O	Cabbage	Vegetable	1.5'	Annual	10	
P	Carrot	Vegetable	.25'	Annual	20	
Q	Kale	Vegetable	1.5'	Annual	10	
R	Corn	Vegetable	1.5'	Annual	12	
S	Spinach	Vegetable	.25'	Annual	20	

EDIBLE HERBS & SPICES						
Plan Code	Common Name	Use in Kitchen	Spacing	Annual vs. Perennial	Quantity	
T	Chive	Herb	1'	Perennial	4	
T	Oregano	Herb	1'	Perennial	4	
T	Sage	Herb	1'	Perennial	4	
T	Thyme	Herb	1'	Perennial	4	
T	Coriander / Cilantro	Herb	1'	Annual	4	
T	Basil	Herb	1'	Annual	4	
T	Bay	Herb	1'	Annual	4	
T	Dill	Herb	1'	Annual	4	
T	Parsley	Herb	1'	Annual	4	
T	Rosemary	Herb	1'	Annual	4	

DRAFT

CONFLUENCE

530 N 3rd St #120, Minneapolis, MN 55104

Tel 612-232-2702 WWW.THINKCONFLUENCE.COM

Probable Construction Cost Opinion

The amounts stated herein are our best estimate of probable construction costs based on current information. Because costs are influenced by market conditions, changes in project scope, and other factors beyond our control, we cannot ensure that actual construction costs will equal this cost opinion.

Scenic Heights Park - Edible Landscape Sitework

Shakopee, MN

21141

4/23/2021

Probable Cost Opinion

Landscape	Qty	Unit	Unit Cost	Item Total	Remarks
Plant Bed Preparation 12" Soil	28	CY	\$ 60.00	\$ 1,680.00	753 SF plant beds
Mulch 3" depth w/ weed barrier	84	SY	\$ 9.00	\$ 756.00	754 SF plant beds
Plant Material					
Orchard Trees	7	EA	\$ 250.00	\$ 1,750.00	cost est. for 2" B&B
Edible Shrubs	22	EA	\$ 40.00	\$ 880.00	
Edible Perennials	146	EA	\$ 8.00	\$ 1,168.00	
Subtotal					\$ 6,234.00
Subtotal					\$ 6,234.00
Total					\$ 6,234.00
Budget					\$ 6,110.00
(Over) / Under					\$ (124.00)